

# *Pristionchus pacificus* *daf-16* is essential for dauer formation but dispensable for mouth form dimorphism

Akira Ogawa<sup>1</sup>, Gilberto Bento<sup>1</sup>, Gabi Bartelmes<sup>1</sup>, Christoph Dieterich<sup>2</sup> and Ralf J. Sommer<sup>1,\*</sup>

## SUMMARY

The nematode *Pristionchus pacificus* shows two forms of phenotypic plasticity: dauer formation and dimorphism of mouth form morphologies. It can therefore serve as a model for studying the evolutionary mechanisms that underlie phenotypic plasticity. Formation of dauer larvae is observed in many other species and constitutes one of the most crucial survival strategies in nematodes, whereas the mouth form dimorphism is an evolutionary novelty observed only in *P. pacificus* and related nematodes. We have previously shown that the same environmental cues and steroid signaling control both dauer formation and mouth form dimorphism. Here, we examine by mutational analysis and whole-genome sequencing the function of *P. pacificus* (*Ppa*) *daf-16*, which encodes a forkhead transcription factor; in *C. elegans*, *daf-16* is the target of insulin signaling and plays important roles in dauer formation. We found that mutations in *Ppa-daf-16* cause strong dauer formation-defective phenotypes, suggesting that *Ppa-daf-16* represents one of the evolutionarily conserved regulators of dauer formation. Upon strong dauer induction with lophenol, *Ppa-daf-16* individuals formed arrested larvae that partially resemble wild-type dauer larvae, indicating that *Ppa-daf-16* is also required for dauer morphogenesis. By contrast, regulation of mouth form dimorphism was unaffected by *Ppa-daf-16* mutations and mutant animals responded normally to environmental cues. Our results suggest that mechanisms for dauer formation and mouth form regulation overlap partially, but not completely, and one of two key transcriptional regulators of the dauer regulatory network was either independently co-opted for, or subsequently lost by, the mouth form regulatory network.

**KEY WORDS:** *C. elegans*, *P. pacificus*, Dauer formation, DAF-16/FOXO, Phenotypic plasticity

## INTRODUCTION

Many organisms show an ability to adopt multiple phenotypes depending on environmental conditions. Such plasticity of phenotypes not only enables these organisms to adapt to changing environments but may also facilitate phenotypic evolution (West-Eberhard, 2003). Despite their importance, the molecular mechanisms that underlie the evolution of phenotypic plasticity have only recently begun to be understood. One example of phenotypic plasticity is nematode dauer formation (Riddle and Albert, 1997). Nematodes go through four larval stages before they reproductively mature. When environmental conditions are unsuitable for reproduction, many nematode species arrest their development at the third larval stage and form specialized larvae called dauers (Lee, 2002). Dauer larvae are resistant to various environmental stresses and can survive for months without feeding, representing one of the major survival strategies in these organisms (Lee, 2002; Ogawa and Sommer, 2009).

In *C. elegans* dauer formation, environmental cues indicating harsh conditions are processed through several signaling pathways and eventually lower the levels of a class of steroid hormones called the dafachronic acids (DAs). The decrease in DA levels shifts the nuclear hormone receptor DAF-12 from the ligand-bound to ligand-free form, which specifies the dauer fate (Antebi et al., 2000; Motola et al., 2006). DAF-12 and the forkhead transcription factor DAF-16 [the *C. elegans* forkhead box O (FOXO) homolog], represent two

crucial transcription factors that are required for the formation of dauer larvae. Loss-of-function mutations in *C. elegans* (*Cel*) *daf-12* completely abrogate the ability to form dauer larvae, resulting in strong dauer formation-defective (Daf-d) phenotypes (Antebi et al., 1998). *Cel-daf-12* mutations suppress dauer formation constitutive (Daf-c) mutations in multiple signaling pathways (Gerisch et al., 2001; Jia et al., 2002; Thomas et al., 1993; Vowels and Thomas, 1992), suggesting that DAF-12 is one of the ultimate regulators of dauer formation. We have previously shown that DAs and DAF-12 regulate the formation of dauer larvae in *P. pacificus*, which is distantly related to *C. elegans* (Fig. 1A) (Ogawa et al., 2009).

Mutations in *Cel-daf-16* severely impair the ability to form dauers and cause a Daf-d phenotype (Lin et al., 1997; Ogg et al., 1997), but they show a phenotypic spectrum different from that of *Cel-daf-12*. In combination with other Daf-c mutations or under dauer-inducing environmental conditions, individuals carrying a *Cel-daf-16* mutation fail to achieve a fully developed dauer morphology, suggesting that *Cel-daf-16* is essential for the normal morphogenesis of dauer larvae (Gottlieb and Ruvkun, 1994; Vowels and Thomas, 1992). However, several Daf-c mutations and strong dauer-inducing environmental conditions can partially suppress the Daf-d phenotype of *Cel-daf-16* mutations. When sterol precursors of DAs that antagonize DAF-12 activity are completely depleted from the culture media, the *daf-16* Daf-d phenotype is partially suppressed (Matyash et al., 2004). Under these conditions, *Cel-daf-16* animals form partial dauer larvae that are characterized by both dauer-like and non-dauer-like features, such as a non-constricted pharynx and SDS susceptibility, suggesting that *Cel-daf-16* is dispensable for the developmental arrest and for part of dauer morphogenesis upon DAF-12 activation.

In addition to dauer formation, *P. pacificus* and related nematodes have a second, unique phenotypic plasticity, which is a polyphenism in the mouth form morphology (Fig. 1A). *P. pacificus* individuals can have either a narrow and long mouth opening,

<sup>1</sup>Max-Planck-Institute for Developmental Biology, 72076 Tübingen, Germany.

<sup>2</sup>Bioinformatics in Quantitative Biology, Berlin Institute for Medical Systems Biology, Berlin 13092, Germany.

\*Author for correspondence (ralf.sommer@tuebingen.mpg.de)

called stenostomatous (St), or a wide and shallow mouth opening, which is referred to as eurystomatous (Eu) (Bento et al., 2010; von Lieven and Sudhaus, 2000). This dimorphism is regulated by environmental cues, including starvation and population density, which are also known to regulate dauer formation.  $\Delta 7$ -DA and mutations in DAF-12 strongly affect the regulation of the mouth form dimorphism, indicating that these signaling mechanisms for the regulation of dauer formation were co-opted for the regulation of this novel plastic trait (Bento et al., 2010).

## MATERIALS AND METHODS

### Nematode strains and cultures

Worms were grown on NGM plates with a lawn of *E. coli* strain OP50. The nematode strains used in this study were PS312 (the wild-type *P. pacificus* strain) and *Ppa-daf-16* (*tu414*, *tu415*, *tu416*).

### Complementation tests

We constructed a double-mutant strain carrying *Ppa-daf-16* (*tu416*) and a dumpy mutation *Ppa-pdl-1*. Hermaphrodites of this double-mutant strain were crossed with males of other Daf-d strains. Non-dumpy F1 progeny resulting from these crosses were individually placed into wells of 96-well plates containing S-medium and *E. coli* food. After replenishing the *E. coli* food several times, we obtained densely grown worm cultures in these wells. After crosses of *tu416* with *tu414* or *tu415*, no dauer larvae were found in the cultures, indicating that these mutants do not complement each other and that they are allelic.

### Preparation of concentrated dauer pheromone extracts and dauer formation assay

We prepared concentrated dauer pheromone extracts as previously described with slight modifications (Ogawa et al., 2009). The pheromone bound to charcoal was sequentially eluted with methanol and 1%, 5%, 10% and 20% toluene in methanol. Eluates were combined and evaporated under vacuum. The dauer formation assay was performed as previously described (Ogawa et al., 2009).

### Preparation of lophenol plates

We slightly modified the reported protocol (Matyash et al., 2004). Agarose washed with 1:1 chloroform:methanol was dissolved in S-medium without cholesterol. We used *E. coli* strain NA22 grown in Dulbecco's Modified Eagle Medium (Invitrogen) as food source. Lophenol (5  $\mu$ g/ml; gift of F. Mende and T. Kurzchalia, Max-Planck Institute for Molecular Cell Biology and Genetics, Dresden, Germany) was added to the bacterial suspension before being placed on agarose plates.

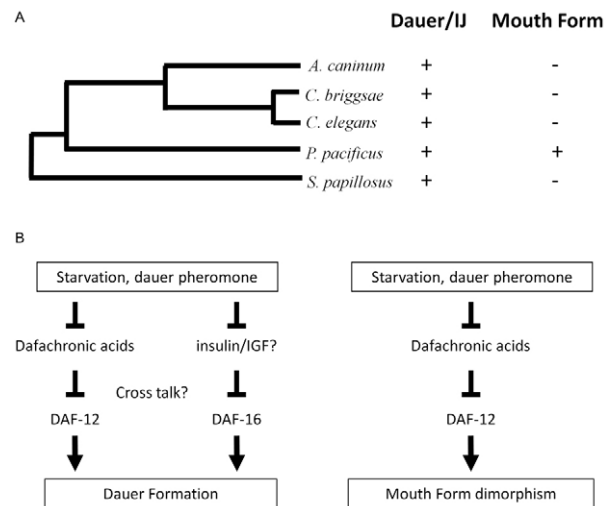
### Mutant allele identification by Illumina genome analyzer and *Ppa-daf-16* molecular structure

We sequenced the genomes of the two alleles *tu415* and *tu416* and generated 42 bp paired-end reads on the Illumina Solexa platform. The strains carrying *tu415* and *tu416* were sequenced to an average depth of 32 $\times$  and 20 $\times$ , respectively. Short reads were aligned with Maq 0.7.1 (Li et al., 2008) using default settings. Single-nucleotide polymorphism (SNP) calling was performed with the Maq `cns2snp` command using default settings. Initially, we retained only homozygous SNP calls in genomic positions with a minimal coverage of three short reads. We further masked out SNPs that were already present in a resequencing run of our nematode wild-type strain or that fell into genomic positions with a low Phred score (<90) in the reference genome assembly.

After identifying a nonsense mutation in *tu416* by Illumina sequencing, we sequenced *Ppa-daf-16* cDNAs from *tu416* and the two other strains and found nonsense mutations in exons that are missing in the genome assembly. The mutations identified are G-to-A (W212 stop), C-to-T (R300 stop) and C-to-T (R222 stop) substitutions in *tu414*, *tu415* and *tu416*, respectively.

### Assays for mouth form dimorphism

The proportions of Eu and St worms were visually examined and starvation and application of dauer pheromone were performed (Bento et al., 2010) as described. Assays involving DA followed the previously described



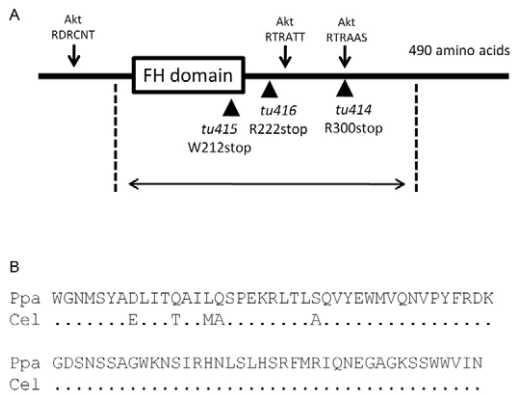
**Fig. 1 Nematode phylogeny and model of signaling mechanisms involved in the regulation of phenotypic plasticity in *P. pacificus* and *C. elegans*.** (A) Phylogeny of nematodes related to *P. pacificus* that have been studied for dauer and infective juvenile formation. The presence of dauer/infective juvenile (IJ) larvae and mouth form dimorphism in these species is indicated. (B) Summary of signaling mechanisms involved in dauer formation and mouth form dimorphism in *P. pacificus*. The question marks indicate that it is currently unknown how DAF-12 and DAF-16 signaling cross-talk in *C. elegans* and other nematodes and whether insulin signaling is involved in *P. pacificus* dauer formation.

protocol (Bento et al., 2010), except that DA was in a water solution instead of ethanol; this change was made because *Ppa-daf-16* strains have been shown to be ethanol intolerant and to have extremely reduced broods when treated with ethanol solution. The datasets were analyzed with one-way ANOVAs and ANOVA assumptions were graphically tested (Quinn and Keough, 2002).

## RESULTS AND DISCUSSION

During our previous study, we performed genetic screens for Daf-d mutants using low-cholesterol liquid medium to obtain *P. pacificus* (*Ppa*) *daf-12* mutations (Ogawa et al., 2009). Cholesterol serves as a precursor for the synthesis of DAs, and cholesterol deficiency strongly enhances dauer formation. Therefore, we reasoned that screening for Daf-d mutants in cholesterol-deficient medium should bias the mutations to genes that act in parallel to, or downstream of, DAs such as *Ppa-daf-12*. Whereas three previously described mutations constitute the *Ppa-daf-12* locus on chromosome I, we found three other mutations, *tu414*, *tu415* and *tu416*, that map to chromosome V. Complementation tests indicated that these mutations are in the same complementation group.

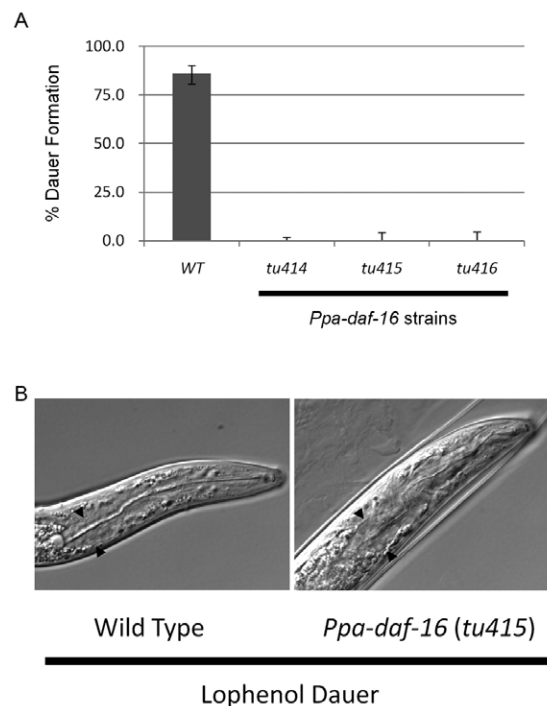
To clone the second Daf-d locus, we subjected genomic DNA of two of the mutant strains to whole-genome sequencing by Illumina genome analyzer (see Materials and methods for details) (Sarin et al., 2008). In one of the strains (*tu416*) we found a nonsense mutation in an exon of *Ppa-daf-16* (Fig. 2A and see Fig. S1 in the supplementary material). cDNA sequencing of *Ppa-daf-16* in *tu416* confirmed this mutation. Furthermore, cDNA sequencing of *Ppa-daf-16* in the alleles *tu414* and *tu415* revealed that these strains also contain a nonsense mutation in *Ppa-daf-16* (Fig. 2A and see Fig. S1 in the supplementary material). *Ppa-daf-16* encodes a forkhead (FH) transcription factor that shows greater than 90% identity to *C.*



**Fig. 2. Structure and conservation of *P. pacificus* DAF-16.** (A) Primary structure of DAF-16. The forkhead (FH) domain is indicated. Three akt phosphorylation motifs are indicated by arrows. Amino acids mutated in the three alleles are indicated by arrowheads. The amino acid stretch that shows similarity to human FOXO3 is indicated by a double-headed arrow. (B) Amino acid sequence alignment of the FH domain of *P. pacificus* and *C. elegans* DAF-16. Identical amino acids are indicated by dots.

*elegans* DAF-16a within the FH domain (Fig. 2B). There are three akt/protein kinase B phosphorylation consensus sites (RXRXXS/T), which correspond to the four consensus sites in *Cel-daf-16*, two of which are in close proximity (Kops et al., 1999) (Fig. 2A). *tu414*, *tu415* and *tu416* result in nonsense mutations that truncate the conserved regions C-terminal to the DAF-16 FH domain, suggesting that they represent strong reduction-of-function alleles (Fig. 2A).

*Ppa-daf-16* individuals do not form dauer larvae on pheromone plates or in overgrown liquid culture (Fig. 3A). To further characterize the phenotype of *Ppa-daf-16*, we examined the effect of depleting sterol precursors of DAs using a previously reported protocol (Matyash et al., 2004). This protocol removes sterol contaminations from the culture medium and uses lophenol instead of cholesterol. Such a culture medium strongly induces dauer formation in *C. elegans* because worms cannot synthesize DAs from lophenol (Hannich et al., 2009; Matyash et al., 2004). However, it is known that lophenol sustains molting by providing the precursor for an as-yet-identified molting hormone (Entchev and Kurzchalia, 2005; Matyash et al., 2004). When wild-type *P. pacificus* eggs laid on an NGM plate (with cholesterol) are transferred to lophenol plates, they develop normally to reproductive adults. All the progeny subsequently arrest as dauer larvae in one to two additional generations on lophenol plates. After going through one generation on lophenol plates, the majority of *Ppa-daf-16* animals arrest their development after the J2 stage. These arrested *Ppa-daf-16* larvae partially resembled the dauer larvae of genetically wild-type animals (Fig. 3B). *Ppa-daf-16* partial dauer larvae had a closed mouth and prominent amphid openings, as with wild-type dauer larvae, but the remodeling of the pharynx was incomplete. Thus, *Ppa-daf-16* partial dauer larvae are clearly distinguishable from wild-type dauers under a dissecting microscope. Unlike wild-type animals, however, a few *Ppa-daf-16* individuals reached reproductive maturity on lophenol plates, and one strain (*tu414*) was kept for five generations under these conditions. These observations suggest that *Ppa-daf-16* is required for dauer morphogenesis. In *C. elegans*, a similar formation of dauer-like larvae on lophenol plates has been reported in a *daf-16* deficiency strain (Matyash et al., 2004). Taken together, these data suggest that the functions of *daf-16* in dauer formation in *P. pacificus* are similar to those in *C. elegans*.

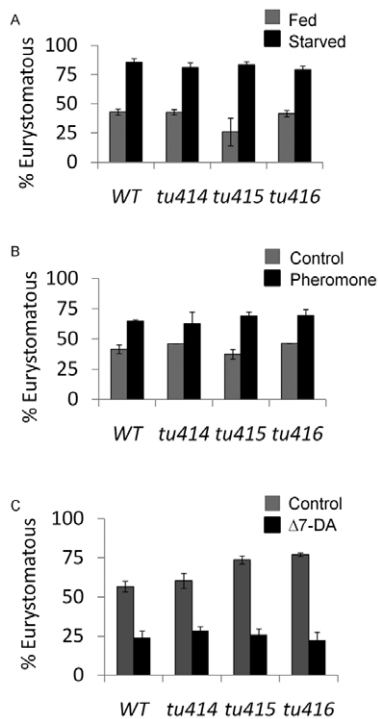


**Fig. 3. *daf-16* is involved in dauer formation in *P. pacificus*.**

(A) Response of the three *Ppa-daf-16* alleles *tu414*, *tu415* and *tu416* to dauer pheromone. Error bars denote 95% binomial confidence intervals. (B) Morphologies of dauer larvae induced on a lophenol plate. Arrowheads indicate the terminal bulb, which is completely remodeled in the wild type but incompletely remodeled in *Ppa-daf-16* (*tu415*).

Next, we examined whether *Ppa-daf-16* is also involved in the regulation of the mouth form dimorphism, as is the case for DA and *Ppa-daf-12*, and found that *Ppa-daf-16* mutant animals behave like wild type. First, all three alleles of *Ppa-daf-16* showed a ratio of Eu to St worms that was similar to that of wild-type animals under well-fed conditions (Fig. 4A). Second, under starved conditions, the proportions of Eu worms were similar for all *Ppa-daf-16* alleles and the wild type (Fig. 4A). We also tested the effect of dauer pheromone. Wild-type worms respond to dauer pheromone by increasing the proportion of Eu animals, and mutations in *Ppa-daf-12* completely abolish the response to dauer pheromone (Bento et al., 2010). By contrast, *Ppa-daf-16* strains showed an increase in Eu worms when treated with dauer pheromone that was comparable to the response of wild type (Fig. 3B). Finally, we tested the effect of  $\Delta 7$ -DA (Fig. 4C). Administration of  $\Delta 7$ -DA strongly influenced mouth form dimorphism in a *Ppa-daf-16* mutant background and decreased the proportion of Eu worms to a comparable degree as in wild-type worms. Taken together, these results suggest that, in contrast to DAF-12, DAF-16 has no or only a minor role in the regulation of mouth form dimorphism in *P. pacificus*.

Our results suggest that DAF-16 is an evolutionarily conserved regulator of dauer formation in free-living nematodes. Mutations in *Cel-daf-16* result in impairment of dauer regulation, as well as defects in the morphogenesis of dauer larvae (Vowels and Thomas, 1992). Mutations in the *daf-16* ortholog in *P. pacificus* also affect dauer formation and result in dauer phenotypes similar to those observed in *C. elegans* (Fig. 3A,B). As *P. pacificus* and *C. elegans* are only distantly related (Dieterich et al., 2008), our results demonstrate deep evolutionary conservation of the function of *daf-16* in dauer formation.



**Fig. 4.** *daf-16* is dispensable for mouth form dimorphism in *P. pacificus*. The effect of (A) starvation, (B) dauer pheromone and (C)  $\Delta 7$ -dafachronic acid on the regulation of mouth form dimorphism in wild-type and *Ppa-daf-16* strains. Data are mean  $\pm$  s.d.

In contrast to dauer formation, mutations in *Ppa-daf-16* did not affect the regulation of mouth form dimorphism. We have shown previously that the polyphenism of mouth form is regulated by starvation and dauer pheromone, two environmental cues that also regulate dauer formation (Bento et al., 2010). In addition, DAF-12 and its ligand DA were shown to play crucial roles in regulating both of these forms of *P. pacificus* phenotypic plasticity. Because both the L3/dauer and Eu/St decisions are regulated by similar environmental conditions and DAF-12, the finding that DAF-16 plays an important role in the L3/dauer but not the Eu/St decision might seem similar to the restricted role of DAF-16 in some, but not all, dauer morphological traits. The finding that the regulation of mouth forms in *P. pacificus* does not require *daf-16* in the multiple tests that we have conducted, suggests that although both dauer formation and mouth form dimorphism share a common regulatory mechanism involving DAF-12 and DA, DAF-16 can only influence dauer formation. Furthermore, these findings suggest that only part of the regulatory cascade that regulates dauer formation in ancestral species was co-opted for the novel plastic trait in the lineage leading to *P. pacificus* (Fig. 1B). Alternatively, the entire regulatory cascade that includes *daf-12* and *daf-16* was co-opted together for the regulation of mouth form dimorphism initially, but the requirement for *daf-16* was subsequently lost. In either case, these findings illustrate the highly flexible nature of the signaling networks that are involved in nematode phenotypic plasticity.

#### Acknowledgements

We thank F. Mende and T. Kurzchalia for instructions regarding the sterol-depletion experiments and generous provision of lophenol; C. Lanz and D. Weigel for whole-genome sequencing; and H. Haussmann for the maintenance of frozen worm stocks. This work was funded by the Max-Planck Society.

#### Competing interests statement

The authors declare no competing financial interests.

#### Supplementary material

Supplementary material for this article is available at <http://dev.biologists.org/lookup/suppl/doi:10.1242/dev.058909/-/DC1>

#### References

- Antebi, A., Culotti, J. G. and Hedgecock, E. M. (1998). *daf-12* regulates developmental age and the dauer alternative in *Caenorhabditis elegans*. *Development* **125**, 1191-1205.
- Antebi, A., Yeh, W. H., Tait, D., Hedgecock, E. M. and Riddle, D. L. (2000). *daf-12* encodes a nuclear receptor that regulates the dauer diapause and developmental age in *C. elegans*. *Genes Dev.* **14**, 1512-1527.
- Bento, G., Ogawa, A. and Sommer, R. J. (2010). Co-option of the hormone-signalling module dafachronic acid-DAF-12 in nematode evolution. *Nature* **466**, 494-497.
- Dieterich, C., Clifton, S. W., Schuster, L. N., Chinwalla, A., Delehaunty, K., Dinkelaeker, I., Fulton, L., Fulton, R., Godfrey, J., Minx, P. et al. (2008). The *Pristionchus pacificus* genome provides a unique perspective on nematode lifestyle and parasitism. *Nat. Genet.* **40**, 1193-1198.
- Entchev, E. V. and Kurzchalia, T. V. (2005). Requirement of sterols in the life cycle of the nematode *Caenorhabditis elegans*. *Semin. Cell Dev. Biol.* **16**, 175-182.
- Gerisch, B., Weitzel, C., Kober-Eisermann, C., Rottiers, V. and Antebi, A. (2001). A hormonal signaling pathway influencing *C. elegans* metabolism, reproductive development, and life span. *Dev. Cell* **1**, 841-851.
- Gottlieb, S. and Ruvkun, G. (1994). *Daf-2*, *Daf-16* and *Daf-23*-genetically interacting genes-controlling Dauer formation in *Caenorhabditis elegans*. *Genetics* **137**, 107-120.
- Hannich, J. T., Entchev, E. V., Mende, F., Boytchev, H., Martin, R., Zagoriy, V., Theumer, G., Riezman, I., Riezman, H., Knolker, H. J. et al. (2009). Methylation of the sterol nucleus by STRM-1 regulates dauer larva formation in *Caenorhabditis elegans*. *Dev. Cell* **16**, 833-843.
- Jia, K., Albert, P. S. and Riddle, D. L. (2002). DAF-9, a cytochrome P450 regulating *C. elegans* larval development and adult longevity. *Development* **129**, 221-231.
- Kops, G. J., de Ruiter, N. D., De Vries-Smits, A. M., Powell, D. R., Bos, J. L. and Burgering, B. M. (1999). Direct control of the Forkhead transcription factor AFX by protein kinase B. *Nature* **398**, 630-634.
- Lee, D. L. (2002). *The Biology of Nematodes*. New York, USA: Taylor and Francis.
- Li, H., Ruan, J. and Durbin, R. (2008). Mapping short DNA sequencing reads and calling variants using mapping quality scores. *Genome Res.* **18**, 1851-1858.
- Lin, K., Dorman, J. B., Rodan, A. and Kenyon, C. (1997). *daf-16*: an HNF-3/forkhead family member that can function to double the life-span of *Caenorhabditis elegans*. *Science* **278**, 1319-1322.
- Matyash, V., Entchev, E. V., Mende, F., Wilsch-Brauninger, M., Thiele, C., Schmidt, A. W., Knolker, H. J., Ward, S. and Kurzchalia, T. V. (2004). Sterol-derived hormone(s) controls entry into diapause in *Caenorhabditis elegans* by consecutive activation of DAF-12 and DAF-16. *PLoS Biol.* **2**, e280.
- Motola, D. L., Cummins, C. L., Rottiers, V., Sharma, K. K., Li, T., Li, Y., Suino-Powell, K., Xu, H. E., Auchus, R. J., Antebi, A. et al. (2006). Identification of ligands for DAF-12 that govern dauer formation and reproduction in *C. elegans*. *Cell* **124**, 1209-1223.
- Ogawa, A. and Sommer, R. J. (2009). Developmental biology. Strategies to get arrested. *Science* **326**, 944-945.
- Ogawa, A., Streit, A., Antebi, A. and Sommer, R. J. (2009). A conserved endocrine mechanism controls the formation of dauer and infective larvae in nematodes. *Curr. Biol.* **19**, 67-71.
- Ogg, S., Paradis, S., Gottlieb, S., Patterson, G. I., Lee, L., Tissenbaum, H. A. and Ruvkun, G. (1997). The Fork head transcription factor DAF-16 transduces insulin-like metabolic and longevity signals in *C. elegans*. *Nature* **389**, 994-999.
- Quinn, G. P. and Keough, M. J. (2002). *Experimental Design and Data Analysis for Biologists*. New York, USA: Cambridge University Press.
- Riddle, D. L. and Albert, P. S. (1997). *Genetic and Environmental Regulation of Dauer Larva Development*. Cold Spring Harbor, NY: Cold Spring Harbor Laboratory Press.
- Sarin, S., Prabhu, S., O'Meara, M. M., Pe'er, I. and Hobert, O. (2008). *Caenorhabditis elegans* mutant allele identification by whole-genome sequencing. *Nat. Methods* **5**, 865-867.
- Thomas, J. H., Birnby, D. A. and Vowels, J. J. (1993). Evidence for parallel processing of sensory information controlling dauer formation in *Caenorhabditis elegans*. *Genetics* **134**, 1105-1117.
- von Lieven, A. F. and Sudhaus, W. (2000). Comparative and functional morphology of the buccal cavity of Diplogastrina (Nematoda) and a first outline of the phylogeny of this taxon. *J. Zool. Syst. Evol. Res.* **38**, 37-63.
- Vowels, J. J. and Thomas, J. H. (1992). Genetic analysis of chemosensory control of dauer formation in *Caenorhabditis elegans*. *Genetics* **130**, 105-123.
- West-Eberhard, M. J. (2003). *Developmental Plasticity and Evolution*. New York, USA: Oxford University Press.

ATCTCATCGTGACCCTTCTCTTCTCTTCTCTTCTGTGTCAATCGATGGATCCATCTCAAACCTCCTTCATCGTCGTATG  
M D P S Q T P S S S Y  
GATCTCCTCGTCAAGATGTTTCGATTGATGACACTCTATGAAGAGGGGAATCAGATCTTCTTCCATGGCAAGAGATCGA  
G S P R Q D V R L M T L Y E E G E S D L L L P M A R D R  
TGTAATACTTGGCCACTGAGAAGACCTCAAATGGATCTAACCAATACTACAAGTCCACTTATTCATGAAGGAATACCTGA  
C N T W P L R R P Q M D L T N T T S P L I H E G I P E  
AGAAAGAGATGAATTTGATTCATCGGATCAATTGAATGTGATGGGTCTTTTCGATGGGAGGAGACACTCCTAATGGTCTCA  
E R D E F D S S D Q L N V M G L S M G G D T P N G L  
ATGATTCATCTGCTGCTTCAGTTTATTCATCCAGTATTTGTTCTCCAACGGGAGGATCGACATCTCTTCTATTCAATGGA  
N D S S A A S V Y S S I C S P T G G S T S L L F N G  
TTGGATACTTCAGCAGGAAAATAAGAAGGGAGCGCAGAGAAGAAAATGCATGGGGAAAATAGAGCTATGCTGATCTGATCAC  
L D T S A G N K K G A T R R N A W G N M S Y A D L I T  
ACAGGCTATACTACAAAGTCCCAGAGAAGAGATTGACTCTATCTCAAGTATACGAGTGGATGGTGCAGAATGTGCCGTATT  
Q A I L Q S P E K R L T L S Q V Y E W M V Q N V P Y  
TCCGTGATAAAGGAGACTCGAATAGTTCTGCCGGATGGAAGAATCAATCCGTCATAATCTCTCCCTCCACTCTCGATTT  
F R D K G D S N S S A G W K N S I R H N L S L H S R F

*tu414* G/A (Stop)      *tu416* C/T (Stop)

ATGAGAATTCAGAATGAAGGAGCAGGAAAAAGCAGTTGGTGGGTTATAAAATCCGGATGCCAAACCAGGACGAAATCCACG  
M R I Q N E G A G K S S W W V I N P D A K P G R N P R  
AAGAACTCGAGCAACTACAATGGATACTGCGACTAAAGCAGTTATGGATAAGAAGAGAAGAGGAGCTAGAAAAGAAGGTAA  
R T R A T T M D T A T K A V M D K K R R G A R K K V  
TGGATCTTCGTGGTTCTTCGTCAGCTCTGTCAGTTTCTTCTTCGGGAGTTGGAGGATCGTCATCTTCCATTCATCTCAC  
M D L R G S S S A L S V S S S G V G G S S S S I L S H

*tu415* C/T (Stop)

GACGTCTACTCTGGACAACCAAATGATGATAGTCTTGTGTGCGAATTATGACTTGTTTCAGGACTCGAGCAGCTTCAACTTC  
D V Y S G Q P N D D S L V S N Y D L F R T R A A S T S  
TGTAGTCACTGGTTCACTCTTAATCGATCTTCTCCTACTCTCGATCAATTCGATGATTTTCGATTTTCCCCATGGGTGG  
V V T G S L N R S S P T L D Q F D D F D F P P W V  
ACTCACTCTGGAGCAACGAATGTGTCATTTCCAGTGATATTCTCGATAGAACTGATCAGATGAGAATTGATGCTCTT  
D S S G A T N A V A I P S D I L D R T D Q M R I D A L  
CGTGGTGCGAATGGACTTCCCTCGAGAGATCAAACAAGAGTTGAAGACAGTGATTAAGAGTGAACCAGGAGTAGCACCTCC  
R G A N G L P R E I K Q E L K T V I K S E P G V A P P  
TCCTTCCATCAAGAACTTTTCATCTGTTCTGTTGGTCCCAACAACCTCACTCAGAATCCTCTTCTCAGAGGTCAACTAATGA  
P S Y Q E L S S V R G P Q Q L T G Q N P L L R G Q L M  
AACCTCCCACGGGTATTCGGTATCTGACGAATCTAAATTCGTATGCGTGGGGACCATTTGGGAGTTCCCTCCCAATTCATGC  
K P P T G I P Y L T N L N S Y A W G P L G V P P N S C  
GGAGTCACAGCTTCTCAAGTATCTGTCCAATCTGCACTTCCATTTGATTTGGAGAATTTGACTCTTCCCTGATCAACCATT  
G V T A S Q V S V Q S A L P I D L E N L T L P D Q P L  
GATGGATATGGATATGGAATCGATACTCCGTCAATGAATTAATCTCAGACGAATAATCAACTTAATTTTCGACATCTAATGGA  
M D M D M E S I L R H E L S Q T N N Q L N F D I  
TGAGTTAATAAGTATCTCTTCCCTCAGTTGAGCATCATGTACTCTTTGTATTATTAATTCATCTTTTGTCAATTTCTGAT  
TGAAAATCTCTTTGGCATCTTTCTGCCTTCTTTCACTCGTCTCTCAATCTCAATCTTAGTCTATCGTTGCTTCCGTTGT  
TCCAGAATCGAGTGCAGTATGACCTACCTGTCACTTCCCTCCCTCCCTTCCCTCCCTCTCCCTCTCCCTCTCCCTTCC  
ATCCATCGTATCATCGACCCGGTTAGATTCGATCTTGTCTGTTTAGTCCATTAATTTGGATGGTTGTTTCATCTCCCTTCC  
TATTTGATCTACCTCATCCCTCATCAGATTTCTTCTTCTTCTATTAATCCCTTCCAATGAGTGGATGGTCAATCTGG  
TTGAATTAACCCGTCGTGAGTAGAGTCTCATCTTAGTCAATCAGAGAGACTCCTTCGTATTCATCGGGTCTGTCCCTTT  
CCCCCTTCCCTTCCCTTGCATTTACCCC