

Fish and chips: functional genomics of social plasticity in an African cichlid fish

Susan C. P. Renn*, Nadia Aubin-Horth[†] and Hans A. Hofmann[‡]

Harvard University, Bauer Center for Genomics Research, 7 Divinity Avenue, Cambridge, MA 02138, USA

*Current address: Reed College, Department of Biology, 3203 SE Woodstock Boulevard, Portland, OR 97202, USA

[†]Current address: Université de Montréal, Département de Sciences biologiques, C.P. 6128, succursale Centre Ville, Montréal, Québec, Canada, H3C 3J7

[‡]Author for correspondence at current address: The University of Texas at Austin, Section of Integrative Biology, Institute for Cellular and Molecular Biology, 1 University Station–C0930, Austin, TX 78712, USA (e-mail: hans@mail.utexas.edu)

Accepted 15 July 2008

SUMMARY

Behavior and physiology are regulated by both environment and social context. A central goal in the study of the social control of behavior is to determine the underlying physiological, cellular and molecular mechanisms in the brain. The African cichlid fish *Astatotilapia burtoni* has long been used as a model system to study how social interactions regulate neural and behavioral plasticity. In this species, males are either socially dominant and reproductively active or subordinate and reproductively suppressed. This phenotypic difference is reversible. Using an integrative approach that combines quantitative behavioral measurements, functional genomics and bioinformatic analyses, we examine neural gene expression in dominant and subordinate males as well as in brooding females. We confirm the role of numerous candidate genes that are part of neuroendocrine pathways and show that specific co-regulated gene sets (modules), as well as specific functional gene ontology categories, are significantly associated with either dominance or reproductive state. Finally, even though the dominant and subordinate phenotypes are robustly defined, we find a surprisingly high degree of individual variation in the transcript levels of the very genes that are differentially regulated between these phenotypes. The results of the present study demonstrate the molecular complexity in the brain underlying social behavior, identify novel targets for future studies, validate many candidate genes and exploit individual variation in order to gain biological insights.

Supplementary material available online at <http://jeb.biologists.org/cgi/content/full/211/18/3041/DC1>

Key words: cichlid, microarray, social behavior, behavior, plasticity.

INTRODUCTION

Brain and behavior are sculpted by a dynamic interplay between genotype and environment. Changes in social status mediate changes in a wide range of molecular, neuroanatomical, endocrine and behavioral characteristics (Oliveira et al., 2002; Fernald, 2004; Sapolsky, 2005) at different time scales (Hofmann, 2003). Nervous systems respond by modulating neural properties and neuroendocrine responses. Such rapid, short-term changes will often lead to sustained, longer-term changes in the brain and behavior *via* differential gene expression, leading to subsequent structural and physiological changes. However, few studies have attempted to determine the molecular underpinnings of socially regulated phenotypes within a comprehensive genomic framework, especially in vertebrates. In the present study, we apply a molecular systems approach in a highly social fish species to ask how social context regulates the molecular and physiological substrates that, in turn, sculpt subsequent behavior.

The African cichlid fish, *Astatotilapia burtoni* (Taxonomic Authority) (formerly *Haplochromis burtoni*) has become an important model system to study the mechanisms underlying socially mediated behavioral change. In this species, 20–30% of males are dominant (D), slow growing, brightly coloured and actively defend territories for mating. The remaining subordinate (S) males mimic females by schooling and displaying cryptic coloration, while experiencing faster growth (Fernald, 1977; Hofmann et al., 1999a). Subordinate males show little aggression

and territoriality and, importantly, have regressed gonads and are thus not reproductive (Fernald and Hirata, 1977a; Fernald and Hirata, 1977b; Francis et al., 1993). These behavioral and physiological characteristics are plastic and influenced by the immediate social environment, such that an individual male switches between the D and S phenotypes several times during its life depending upon its relative ability to obtain and maintain access to a territory through encounters with other males (Hofmann et al., 1999a). Environmental conditions, availability of territorial shelters, relative body size and physiological condition influence the probability of acquiring and maintaining a territory. The phenotypic switch occurs over a timescale of minutes to days to weeks in both the field and the laboratory (White et al., 2002; Hofmann, 2003; Burmeister et al., 2005).

In the laboratory, *A. burtoni* has been the focus of hormonal and molecular studies related to a broad range of phenotypic traits that are affected by the transition between the two male phenotypes (Fig. 1) (for reviews, see Hofmann and Fernald, 2000; Fernald, 2002; Hofmann, 2003; Fernald, 2004). Variation in several different components of the endocrine system reflects the complexity underlying the corresponding phenotypic switch between these dramatically different male phenotypes. Neuroendocrine pathways regulating androgen production (Parikh et al., 2006), growth (Hofmann et al., 1999a; Hofmann et al., 1999b) and stress response (Fox et al., 1997) change in a complex fashion as animals undergo phenotypic change (Fig. 1). Parikh et al. (Parikh et al., 2006)

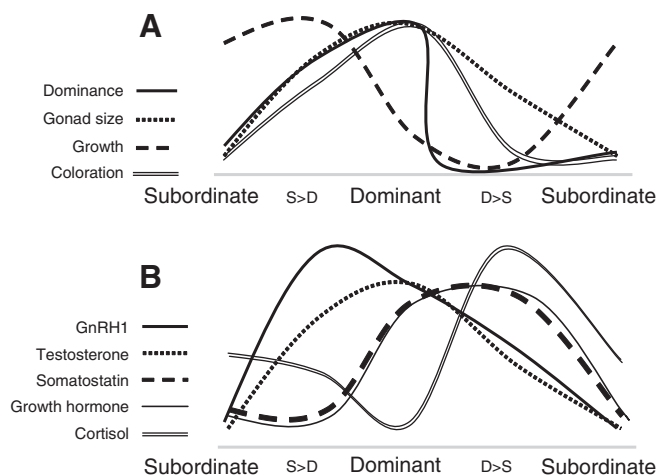


Fig. 1. Schematic representation of (A) phenotypic and (B) physiological characteristics associated with dominant (D) and subordinate (S) male phenotypes in *A. burtoni*. The graphs are based on the following studies: gonad size (Hofmann and Fernald, 2000); growth (Hofmann et al., 1999a); GnRH1 (White et al., 2002); testosterone (Francis et al., 1993); somatostatin (Hofmann and Fernald, 2000); growth hormone (Hofmann et al., 1999b); and cortisol (Fox et al., 1997).

suggested that the higher levels of testosterone (T) and 11-ketotestosterone (11-KT) that they measured in D males might promote aggressive behavior, as has been shown using androgen manipulation in other fish species. Production and release of neuropeptides and neuromodulators such as gonadotropin-releasing hormone (GnRH1) (White et al., 2002) and somatostatin (Hofmann and Fernald, 2000; Trainor and Hofmann, 2006; Trainor and Hofmann, 2007) are higher in dominant males. According to White et al., GnRH1 mRNA levels and gonadosomatic index (GSI) (a measure of gonadal development) are positively correlated (White et al., 2002). The higher level of GnRH1 in D males coincides with territory acquisition and mating opportunity; as such, it is similar to GnRH changes in seasonally reproducing species (Amano et al., 1995; Dawson et al., 2001; Nelson, 2005; Hofmann, 2006). Fluctuations at the molecular level also co-vary with the observed behavioral switch of male phenotype. In the case of GnRH (Parhar et al., 2005; Au et al., 2006) and somatostatin (Trainor and Hofmann, 2006), specific receptor sub-types are regulated according to social status. Furthermore, the membrane properties of GnRH1-expressing neurons, reduced excitability in S males correspond with the differences in peptide release between D and S males (Greenwood and Fernald, 2004).

Manipulation of the social environment allows experimental control of the phenotypic switch (Francis et al., 1993; White et al., 2002; Burmeister et al., 2005). The ease of experimental manipulation is paired with a wealth of ecological and evolutionary information available for haplochromine cichlids in general (for a review, see Kocher, 2004; Salzburger et al., 2005). For example, there is thought to be a trade-off between reproduction and survival, such that territorial males, the sole reproducers, are also subject to higher mortality rates through predation, probably due to their conspicuous coloration (Fernald and Hirata, 1977a; Fernald and Hirata, 1977b; Maan et al., 2008). Furthermore, *A. burtoni* is currently undergoing whole-genome sequencing, along with three other African cichlid species (see www.broad.mit.edu/models/tilapia/), and thus offers an unrivaled laboratory-based model

system for the genomic analysis of complex and ecologically relevant phenotypes.

cDNA microarrays for transcript profiling, have become a powerful tool when applied to species of behavioral, ecological or evolutionary interest [e.g. alternative life histories (Aubin-Horth et al., 2005), cooperative breeding (Aubin-Horth et al., 2007), social behavior (Grozinger and Robinson, 2002; Whitfield et al., 2003; Robinson et al., 2005), response to heat stress (Buckley et al., 2006), response to environmental estrogens (Martyniuk et al., 2006) and physiology of drug addiction (Rhodes and Crabbe, 2005)]. In the present study, we employ a microarray platform that contains many known candidate genes as well as ~4000 brain-derived cichlid cDNAs (Renn et al., 2004). Such a combined candidate gene and genomic strategy allows hypothesis-driven and discovery-based experiments on a single platform. The obviously complex nature of behavioral traits – such as this socially regulated, reversible switch between D and S phenotypes – requires a discovery-based approach in order to identify the many genes involved.

In the present study, we analyze gene transcript patterns for reproductively active D males and reproductively suppressed S males as well as for brooding females. We then compare the expression patterns for each of the three phenotypes in order to identify gene sets associated with reproduction or dominance behavior, providing insight into the molecular modularity underlying these phenotypes. Next, we annotate the array features according to gene ontology (GO), with the goal of identifying gene regulation within molecular categories free of *a priori* expectations or experimenter bias. Finally, we examine variation in gene expression patterns between individual animals within a social phenotype and ask whether any of these variable genes are also those that are differentially expressed between the social phenotypes.

MATERIALS AND METHODS

Animals

Astatotilapia burtoni (Günter) from a wild-caught stock population were kept in aquaria under conditions mimicking their natural environment (Fernald and Hirata, 1977b): pH 8.0, 28°C water temperature and 12h:12h light:dark cycle. Gravel substrate and terracotta shelters allowed the establishment and maintenance of territories necessary for reproduction (Fernald and Hirata, 1977a). Fish were fed every morning with cichlid pellets and flakes. All work was carried out in compliance with Animal Care and Use Guidelines.

Behavioral experiments

Males were marked using colored bead combinations attached near to the dorsal fin. Nine groups of 2–3 males with 2–3 gravid females were established in half of a 100 liters aquarium. Each group was visually isolated from neighboring fish. Ten-minute behavioral observations were made approximately twice every week for five weeks by directly observing chasing, threat, display, border threat, courtship, flee, schooling and carousel (as described by Fernald, 1977). Behavioral measures were used to calculate a dominance index (DI), i.e. the sum of all aggressive behaviors observed (threat, chasing, border threat and carousel) minus the number of submissive behaviors observed (flee) and a reproductive index (RI), i.e. the total of all reproductive behaviors (court, dig, spawn). On the final day of the experiment, males of each status were taken for gene expression profiling only if they had continuously expressed either the D or S phenotype for the past 28 days. Six mouth-brooding females were also selected for expression profiling. The 18 fish used for gene expression analysis were obtained from a total of seven

different groups on the basis of stable phenotype. For the purpose of hybridization design the animals were treated as equivalent within phenotype, though comparisons between individuals can be made indirectly (see below). Close inspection of the behavioral and microarray data did not reveal any covariation between animals derived from the same social group. Standard length, body mass and gonad mass were measured for each fish in order to calculate the GSI as gonad mass/body mass. Condition factor (CF) was calculated based on the residuals from the regression of body mass on standard length for before and after the experiment ($r^2=0.95$; $P=2.79 \times 10^{-6}$), and growth rate (GR) was calculated as the relative change in standard length over the course of the experiment. Whole brains were dissected and stored in RNAlater (Ambion, Austin, TX, USA) within 5 min of initial tank disturbance.

The array used in the present study has numerous redundant features, i.e. two or more features represent the same gene. We exploited this property for quality control purposes and to assess the sensitivity of the approach. For example, the array includes four independent features that represent the neuropeptide GnRH1 (two previously cloned cDNAs and two obtained independently from the cDNA library), known to be expressed in only ~300 neurons and upregulated in D males (Davis and Fernald, 1990; White et al., 2002). All four features were similarly significantly differentially expressed, being upregulated with dominance, and thus serve as both a biological and a technical control demonstrating the sensitivity even with whole-brain RNA.

Microarray analysis

Brains were homogenized (Tissue tearor, Biospec products, Bartlesville, OK, USA) and total RNA was extracted according to standard Trizol (Invitrogen, Carlsbad, CA, USA) and phase-lock gel (Eppendorf; Westbury, NY, USA) protocols. RNA integrity was determined on the Bioanalyzer (Agilent; Santa Clara, CA, USA) and spectrophotometer (Agilent) prior to indirect RNA labeling protocol, starting with 2 µg of total RNA according to Renn et al. (Renn et al., 2004). Briefly, each RNA sample was labeled twice, once with Cy3 and once with Cy5. After purification from unincorporated label, each sample was divided in two, combined with the appropriate samples and every individual was compared with two individuals from each of the other two phenotypes in a balanced loop design incorporating a dye-reversal (see below for how to access annotation of submitted data at NCBI's GEOdatabase for further details). Targets were hybridized to the brain-specific cDNA array from *A. burtoni* (Renn et al., 2004) at 65°C for 12–16 h. Arrays were scanned on an Axon 4000B arrays scanner (Genepix 4.0; Molecular Devices, Sunnyvale, CA, USA). The loop design allows for the direct comparison of samples of interest, thus offering greater statistical power with fewer replicates (Churchill, 2002).

After filtering for bad feature morphology, hybridization artifacts and low intensity (<2 s.d. above local background), raw data were imported into R software [v.1.0 R-Development team, 2004, Vienna, Austria (R Development Core Team 2006)] and normalized using the Linear Models for Microarray Data package [LIMMA v.1.6.6 (Smyth et al., 2004)]. Background-subtracted mean intensities were normalized using a within-array printtip-lowess normalization and used to calculate ratios for a Bayesian analysis of gene expression levels [BAGEL v.3.6 (Townsend and Hartl, 2002)]. BAGEL takes advantage of additional information obtained from transitive comparisons of individuals in loop designs experiments (Townsend and Hartl, 2002; Churchill, 2002). Genes represented by more than one feature on the array were only counted as significant if at least one representative passed the significance threshold and the full

complement survived Fisher's test of combining probabilities from multiple tests of significance [p.794 in Sokal and Rohlf (Sokal and Rohlf, 1995)]. All raw and processed data are available at GEOdatabase (www.ncbi.nlm.nih.gov/projects/geo/), sample numbers GSM267785–819 of series GSE10624.

Functional annotation

The clone templates for PCR amplification were end sequenced (Salzburger et al., 2008), resulting in 4258 expressed sequence tags (ESTs), 3670 of which were deemed to be of high quality and have been submitted to GenBank (accession number CN472211–CN468542) and are maintained at the Dana-Farber Cancer Institute as a GeneIndex (http://compbio.dfci.harvard.edu/tgi/cgi-bin/tgi/gimain.pl?gudb=a_burtoni) such that 1280 clones combine into 399 tentative contigs (TC), leaving 2381 singleton sequences for a total of 2780 unique sequences. Half (49.5%) of the sequences (1408 out of 2842) could be annotated with a 'best hit' at a threshold of e^{-12} or better according to BLAST alignment to UniProt (v.5.2). GO terms were applied to 869 unique cichlid genes by transitive annotation, meaning that the GO annotations for a cichlid gene's best hit were collected and used in the present study for further analysis. In order to avoid species bias, we collected GO terms from all genes with the same name as the best hit annotation. GO annotations also include confidence codes. The less reliable annotations derive from 'inferred sequence similarity (ISS)' or 'inferred electronic annotation (IEA)' (The Gene Ontology Consortium, 2000), therefore we excluded those annotations when transitively applying GO terms to the ESTs represented on the *A. burtoni* microarray. The resulting GO graphs [referred to as directed acyclic graphs (DAGs)] were then 'slimmed' to 183 terms and a total of 4102 total annotations. For the 'slimming' process, the leaf-most nodes that were selected to contain a minimum of 10 annotated cichlid sequences, and parent nodes were retained only if an additional 10 cichlid sequences were annotated at that level.

Over- and under-representation of GO terms for a regulated set of genes was determined in Cytoscape (Shannon et al., 2003) using the Biological Network Gene Ontology tool, BiNGO (Maere et al., 2005), which relies upon hypergeometric statistical significance. As GO categories are highly non-independent, the statistical treatment of these terms is still under discussion (Ge et al., 2003). Also, owing to the small number of genes for each ontology term and the relatively small number of genes that are regulated, there is less statistical power to identify significantly under-represented GO terms. For these reasons, we use GO analysis as a hypothesis-generating tool and report only uncorrected hypergeometric *P*-values.

Clustering

Prior to clustering, features representing replicate ESTs were collapsed by combining probabilities from multiple tests of significance [p. 794 in Sokal and Rohlf (Sokal and Rohlf, 1995)], and the mean expression level was determined for each set of features. A hierarchical clustering analysis was applied to the list of genes that were significantly regulated according to D, S and brooding female phenotypes. The estimated gene expression levels were used to obtain the dissimilarity matrix by applying Euclidian distance measure, which integrates the effects of amplitude of ratios as well as direction (correlation) in patterns. Clustering analysis of gene expression patterns of each individual was performed using the *hclust* function in R software v.2.0.1. Clustering was based on dissimilarity measures obtained using the *dist* functions in the *stats* package. The consensus tree and bootstrap confidence values for each tree node were obtained with the *consensus* function in the *maanova* package (Wu et al., 2002).

The consensus tree and confidence values were calculated as the proportion of trees obtained with bootstrapped datasets that agreed with the original tree. Each bootstrapped tree was based on the Euclidian distance matrix calculated for each of 1000 permuted gene expression profile datasets obtained by resampling with replacement. Alternate clustering methods and different measures of distance are available and are similarly appropriate for gene expression analysis. Hierarchical clustering, based upon all features on the full array rather than on regulated genes only, provided a similar tree with reduced confidence values at each node (not shown). The *heatmap* function and colour options in the package *gplots* were used to visualize clusters of gene expression, the *z*-transformed expression ratios were grouped by *k*-means function in the *stats* package of R and ordered as such, while the samples were ordered according to the consensus hierarchical cluster. GO terms provide a means to address the possible functional relationship of a cluster of genes that are coordinately regulated. However, no statistically significant over- or under-representation of GO terms was seen for any of the gene groups identified by the *k*-means clusters according to a hypergeometric test (not shown).

RESULTS AND DISCUSSION

Male dominance behavior and gene expression differences

Individually tagged males were placed into community tanks with females such that naturalistic dominance hierarchies were established among the males according to standard protocol (Hofmann et al., 1999a). Regular observations over the course of five weeks identified males of definitive dominant (D) and subordinate (S) phenotypes. The territory-holding males ($N=6$) behaved more aggressively than S males ($N=6$), as reflected by their significantly higher DI (D males, 15.7 ± 1.7 ; S males, -3.5 ± 0.8 ; *t*-test, $P<0.001$) and RI (D males, 2.12 ± 0.57 ; S males, 0.0 ± 0.0 ; *t*-test, $P=0.004$). The GSI varied continuously across the two groups, showing the expected (yet, in this study, non-significant) trend for higher GSI in dominant males (D males, 0.85 ± 0.23 ; S males, 0.56 ± 0.04 ; *t*-test, $P=0.25$). There was no significant difference in growth rate (GR) over the course of the experiment (D males, 1.25 ± 0.215 ; S males, 1.39 ± 0.285 ; *t*-test, $P=0.69$) or CF (residuals) at the time of sacrifice (D males, 0.01 ± 0.053 ; S males, -0.01 ± 0.061 ; *t*-test, $P=0.58$). Note, however, that CF differed marginally when the social communities were established at the beginning of the experiment (D males, 0.03 ± 0.051 ; S males, -0.03 ± 0.068 ; *t*-test, $P=0.07$), which could suggest that increased condition may be

advantageous when ascending to dominance in the first place. Specific behaviors also varied significantly and predictably between the D and S males (Fig. 2): increased presence of an eye-bar in D ($P<0.001$); increased schooling behavior of S ($P=0.0005$); more fleeing behavior by S ($P=0.004$); and more frequent chasing behavior ($P=0.0003$), border threat behavior ($P=0.08$) and sexual behavior ($P=0.003$) by D. These results are representative of D and S males in *A. burtoni* as previously described (e.g. Francis et al., 1993; Hofmann and Fernald, 2000; White et al., 2002).

For the first investigation of our microarray data, we conducted Bayesian analysis of gene expression (Townsend and Hartl, 2002) by treating the six individuals of each phenotype as biological replicates and calculated gene expression differences at the phenotype level (D, S or brooding female). When comparing the different phenotypes, array features representing 3647 cichlid unique sequences passed quality filters in a sufficient number of hybridizations to be considered in the results. D and S phenotypes showed significant differences in gene expression for 171 genes [Bayesian posterior probability, BPP>0.99] (87 upregulated; 84 downregulated with dominance (supplementary material Tables S1 and S2)). Permutation analysis of the data shows that, at this significance threshold of BPP>0.99, only ~17% of these 171 genes could be expected to show significant differential expression by chance, a reasonable rate of false positives (Table 1). Therefore, almost five percent of the genes studied were differentially regulated in the brain according to male dominance phenotype. This percentage is considerably smaller than that found in typical honey bee colonies (39%), where nurse and forager phenotypes are not only distinguished by their social role but also differ in their daily behavioral routines and the environment in which they move about (Whitfield et al., 2003). These results also show phenotype-specific regulation of a considerably smaller portion of the genome compared with the 15% observed difference between alternative mating tactics in a study of Atlantic salmon males, which similarly compared sexually mature and immature males (Aubin-Horth et al., 2005).

Candidate genes

The microarray was designed to include candidate genes previously studied in the context of social dominance and other behavioral contexts in *A. burtoni* (Hofmann, 2003; Fernald, 2004). The inclusion of known candidate genes allowed us to test multiple hypotheses and also offered validation of the microarray results by comparison with

Table 1. False discovery rate (FDR) estimated by randomization of hybridization ratios both between genes and between arrays using permutation with replacement and resampling for analyses conducted at the level of phenotype and sex

Phenotypes compared	Bayesian probability threshold			
	$P\geq 0.99$	$P\geq 0.995$	$P\geq 0.999$	$P\geq 0.9995$
Male dominant>Male subordinate	89	61	41	37
Male dominant>Female	273	218	148	127
Male subordinate>Male dominant	84	61	26	23
Male subordinate>Female	277	220	136	116
Female>Dominant male	205	154	96	78
Female>Subordinate male	219	164	95	83
Males>Female	316	269	174	147
Female>Males	253	211	119	103
FDR %	17.08	10.76	3	2.07
standard error	0.61	0.57	0.39	0.39

The number of features identified by analysis of the permuted dataset as significant for each threshold is reported as the average ($N=5$) percentage of the number of features identified at that threshold by analysis of the original dataset.

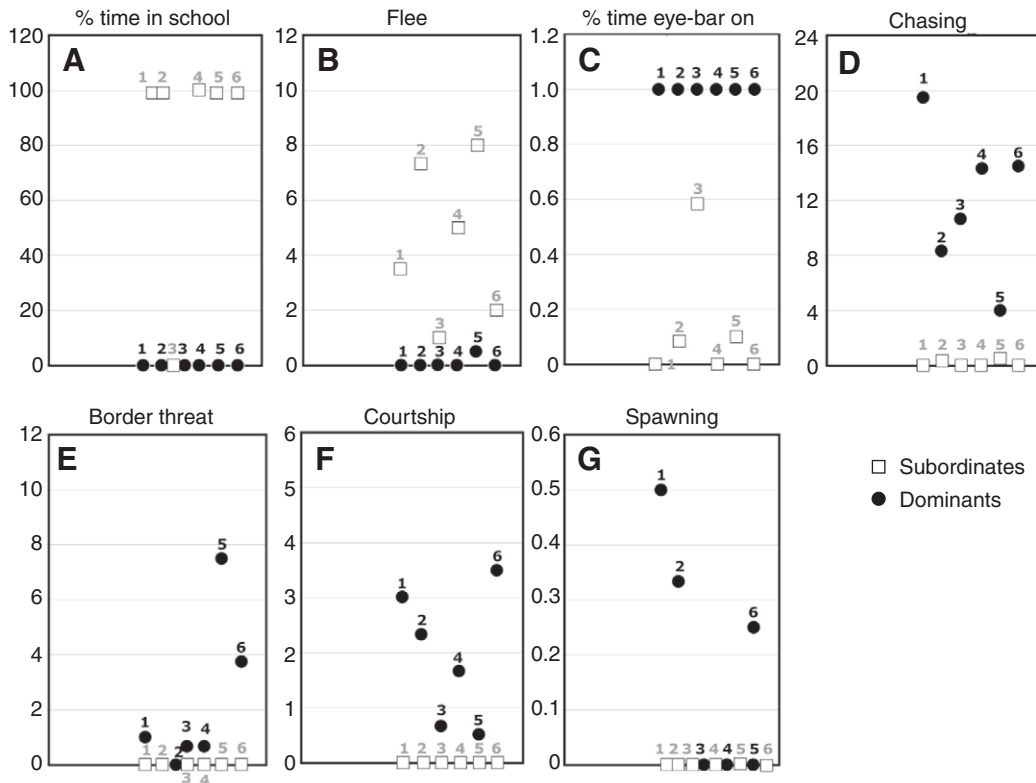


Fig. 2. Social behavior varied significantly and predictably between the dominant (D) and subordinate (S) males. *y*-axis represents (A,C) the percent time or (B,D,E,F) the mean number of observed events per 10 min focal observation. The numbers identify individual males (filled circles, dominants; open squares, subordinates).

previous studies for some of these genes (summarized in Fig. 1). For instance, peptidergic neurons in the pre-optic area (POA) and other brain regions express several neurohormones (e.g. arginine vasotocin, GnRH1, galanin) as well as neurohormone receptors and steroid receptors, which have previously been shown in separate studies to play a role in the regulation of social behavior. Below, for the first time, we provide a combined analysis of these neuroendocrine pathways in *A. burtoni*.

As predicted from previous studies using ribonuclease protection assays and *in situ* hybridization, among the three GnRH neuropeptide genes that are expressed in the brain of fish, only GnRH1, the form expressed in the POA (White et al., 1994; White et al., 2002), showed highly significant regulation in the microarray results (BPP=0.9998), with D males having higher levels. Given the small number of cells expressing this neuropeptide (~300) (Soma et al., 1996; Munz, 1999), confirmation of GnRH1 regulation by our microarray analysis provides an important cross-validation and confirms the sensitivity of the array even when using whole-brain RNA. As predicted from previous studies (White et al., 1994; White et al., 2002), our results also confirmed that the other two forms of GnRH, GnRH2, (midbrain) and GnRH3 (terminal nerve), are not regulated according to male social phenotype (BPP=0.366 and 0.700, respectively). None of the GnRH receptor sub-types on the array were significantly regulated, although studies have demonstrated their regulation in the pituitary relative to sexual maturity and social status (Parhar et al., 2005; Au et al., 2006).

Galanin, a neuropeptide that links metabolic activity and reproduction through regulation of GnRH release (reviewed by Kageyama et al., 2005; Tortorella et al., 2007), was marginally upregulated in D males (BPP=0.9592). There is considerable evidence from mammals that galanin reduces nociception (Wiesenfeldhallin et al., 1992), increases food intake (Schick et al., 1993) and stress reactivity (Holmes et al., 2002), plays a role in regulation of sexual behavior, and is itself regulated by GnRH and

estrogen (Gabriel et al., 1993). Specifically, in fish, galanin is thought to play a role in regulation of food intake and is widely distributed in the brain, being localized to the olfactory bulb, telencephalon, hypothalamus, midbrain and posterior brain (reviewed by Volkoff et al., 2005), as well as the pituitary (Jadhao and Pinelli, 2001) and peripheral tissues (Johnsson et al., 2001). The results of the present study suggest the intriguing possibility that galanin might be upregulated in D males as a response to reduced food intake and constant challenges to their social status by other individuals. Future studies will test these novel hypotheses.

Arginine vasotocin (AVT; represented by multiple clones on the array), the non-mammalian homolog of arginine vasopressin (AVP), was among the most strongly regulated genes in this study, being upregulated in the brains of D males (BPP>0.9999). AVP/AVT has been implicated in the regulation of social behavior across vertebrates, including aggression and social affiliation (Goodson, 1998; Goodson and Adkins-Regan, 1999; Winslow et al., 1993). In teleost fish, AVT is known to play a role in male mating tactics [peacock blenny (Grober et al., 2002; Carneiro et al., 2003); midshipman (Goodson and Bass, 2001)], as well as in the behavioral regulation of sex change and the associated territorial acquisition [bluehead wrasse (Semsar and Godwin, 2003; Semsar and Godwin, 2004)]. AVT is also associated with territorial aggression [damsel fish (Santangelo and Bass, 2006)] as well as dominant and territorial behavior in both the male and female of a breeding pair when compared with their subordinate helpers in another cichlid species, the cooperative breeding *Neolamprologus pulcher* (Aubin-Horth et al., 2007). Our data from *A. burtoni* suggest a role for AVT in regulation of dominance and are consistent with an *in situ* hybridization-based study (Greenwood et al., 2008). The AVT V1a receptor, which plays a fundamental role in affiliative behaviors in voles (Lim et al., 2004), was not represented on the array.

The enzyme aromatase, which converts testosterone to estrogen, is important in sex determination (Nakamura and

Table 2. Best hits for dominant (D) and subordinate (S) regulated genes

	Dominant (D) greater than subordinate (S) (D>S)	Subordinate (S) greater than dominant (D) (S>D)
Peptides, neurotransmitters and growth hormones	Prolactin 1 Prolactin 2 Somatotropin Somatolactin Proopiomelanocortin Arginine vasotocin GABA (receptor β subunit) Tilapia growth hormone Glycoprotein α GnRH1 Brain aromatase	Orphan nuclear hormone receptor Kainate receptor Cholecystokinin C-type natriuretic peptide
Granins	Chromogranin Neurogranin Secretogranin II	
Cell structure	β -actin β -tubulin Septin 7 Elongation factor 1a	Clasp2 (regulation of microtubule dynamics)
Synaptic vesicle	Similar to synaptophysin Q5RCZ2_PONPY (secretory vesicle electron transport)	
Transcription factor	ETS family efr1	bHLH HLH
Axonal growth	Neuromodulin Neuroserpin	
Cell-cycle regulation	Schip-1 Pdc4	Rbm5 protein putative tumor suppressor
Cellular metabolic enzymes	Enolase 1 Enolase 2 Uridine kinase Lactate dehydrogenase	Many ATPases NADH dehydrogenase and oxidoreductase Glutathione S-transferase Glutamine synthetase Betaine aldehyde dehydrogenase Leucine carboxyl methyltransferase

Dominant (D) and subordinate (S) regulated genes were grouped according to presumed functional category (see Materials and methods for details). For array feature identification and BPP for differential regulation see Tables S1 and S2 in supplementary material.

Kobayashi, 2005), sex change in fish (Black et al., 2005; Marsh et al., 2006) and regulation of social behavior (Hallgren et al., 2006). There are two isoforms of aromatase, one localized to the brain and the other to the gonads, and both are represented on the microarray. In the present study, D males showed increased neural expression of the brain form (two features on the array, BPP=0.9914; 0.9997) but not the gonad form of aromatase (BPP=0.3192). This result suggests that the elevated testosterone levels found in D males (Parikh et al., 2006) may affect aggression, courtship or dominance through aromatization and subsequent action *via* estrogen receptors in the brain. In birds, aromatase activity increases during the territorial period and correlates with aggression (e.g. Soma et al., 2003; Silverin et al., 2004). Blocking brain aromatase reduces male courtship in guppies (Hallgren et al., 2006), further suggesting estrogen-mediated neuroendocrine regulation of reproductive behavior for some species. However, studies on gonadal sex change in fish (Black et al., 2005; Marsh et al., 2006) suggest the opposite relationship between brain aromatase and male aggression and thus a more complex mechanism, possibly involving differences in receptor expression, binding proteins or anatomical localization. Estrogen receptors did not show differential regulation on the array, although they may have been expected to, according to Burmeister et al. (Burmeister et al., 2007). The inability to reliably detect differences in receptor gene expression is probably due to small localized effects that are masked by whole-brain gene expression levels.

Novel genes

We bioinformatically annotated the ESTs obtained from the cichlid cDNA library features represented on the microarray (see Materials and methods). Several of the genes thus identified fall into categories that represent candidates likely to play a role in the social regulation of a complex phenotype (Table 2). In the present study, these genes are considered to be 'novel genes' rather than 'candidate genes' because the annotation process does not involve rigorous manual curation of genes *a priori*, which was employed for the candidate genes discussed above. In addition to many genes involved in cellular metabolism that are differentially regulated between the two social phenotypes, we found genes encoding structural proteins, cell-cycle regulators, specific transcription factors, a plethora of neuropeptides, components of the neurosecretory machinery and neurotransmitter receptors.

Genes coding for structural proteins, such as tubulin and actin, and proteins that bind scaffold elements, such as septin 7 and ELF-1a, were more highly expressed in D males reflecting the observed differences in soma size between D and S for pre-optic neurons expressing GnRH1 (Francis et al., 1993) and somatostatin (Hofmann and Fernald, 2000). Furthermore, genes involved in axonal growth, neuromodulin [also known to play a role in modeling of sex-specific brain regions (Simerly, 2002)] and neuroserpin (Miranda and Lomas, 2006), were also upregulated in D males. Taken together, the regulation of this gene set strongly suggests increased neuronal re-wiring in D males not previously reported and possibly similar in scale to the massive remodeling of neural circuits seen in seasonal

accession to territoriality and mating accompanied by increased testosterone levels in song birds (Devoogd and Nottebohm, 1981; reviewed in Arnold, 1992). It is particularly intriguing that neuroserpins may play a role in anxiety and sexual behaviors. Specifically, neuroserpin-deficient rats showed decreases in exploratory behavior together with increases in anxiety and neophobia (Madani et al., 2003). In swordtail fish, neuroserpin expression increased in the brain of females exposed to an attractive male compared with females exposed to a non-attractive male (Cummings et al., 2008). This association of neuroserpin with social behavior is intriguing in that it may enable dominant males to approach and interact with novel stimuli such as competitors and potential mates.

Similarly, several cell-cycle regulators (Table 2) were significantly regulated in D and S phenotypes, suggesting that the extent of neurogenesis and subsequent cell death may also differ between these phenotypes, a hypothesis consistent with the finding that cell proliferation in the brain is correlated with high social status in rainbow trout (Sorensen et al., 2007). While there is currently no other evidence for plasticity of this kind in neuroanatomical structures outside the POA in *A. burtoni*, gross neuroanatomical differences that correspond to species' typical reproductive strategies have been identified in other cichlid species (Pollen et al., 2007).

Genes encoding neuropeptides and protein hormones that have not been previously studied in this system were perhaps the most striking, although not unexpected, class of genes regulated according to social status. In addition to the neuropeptides GnRH1, AVT and galanin discussed above, we found somatotropin, prolactin and somatolactin [all members of the growth hormone (GH) family of genes], as well as proopiomelanocortin (POMC), to be upregulated in D males. Interestingly, a similar pattern of endocrine gene regulation (GH, prolactin, somatolactin, POMC) is observed in Atlantic salmon, such that the expression profile for the early maturing 'sneaker' male compared with immature males matches the profile observed in the present study for reproductive D males, suggesting conserved function of these pathways (Aubin-Horth et al., 2005). We found cholecystokinin (CCK) and natriuretic peptide to be upregulated in S males.

Since the activity of pituitary somatotrophes is associated with testis maturity and is stimulated by high levels of GnRH in several fish species (reviewed by Legac et al., 1993; Yu and Peter, 1991), we suggest that the increased expression of growth-related genes in D males is probably related to gonad maturation. Somatolactin, which thus far has been found only in teleost fish, is involved in both growth (Forsyth and Wallis, 2002) and color change (Fukamachi and Sugimoto, 2004), two plastic traits associated with social dominance in *A. burtoni*. Importantly, the observed increase in expression of GH is consistent with the previous finding that circulating GH levels are higher in D males (Hofmann et al., 1999b). Additionally, the growth hormone-releasing hormone (GHRH)/GH axis facilitates territorial behavior in *A. burtoni* (Hofmann et al., 1999b; Trainor and Hofmann, 2006) (note that GHRH was not represented on the array). Finally, antagonists of the neuropeptide somatostatin (which inhibits GH production and release in the pituitary; this gene was not represented on the array) inhibit aggressive behavior in *A. burtoni* males without affecting sexual behavior (Trainor and Hofmann, 2006).

In addition to neuropeptide genes, we found many genes involved in production, maturation, release and reception of neuropeptides and neurotransmitters to be differentially expressed between social phenotypes. For example, secretory granule proteins, such as a homolog of synaptophysin as well as members of the granin family

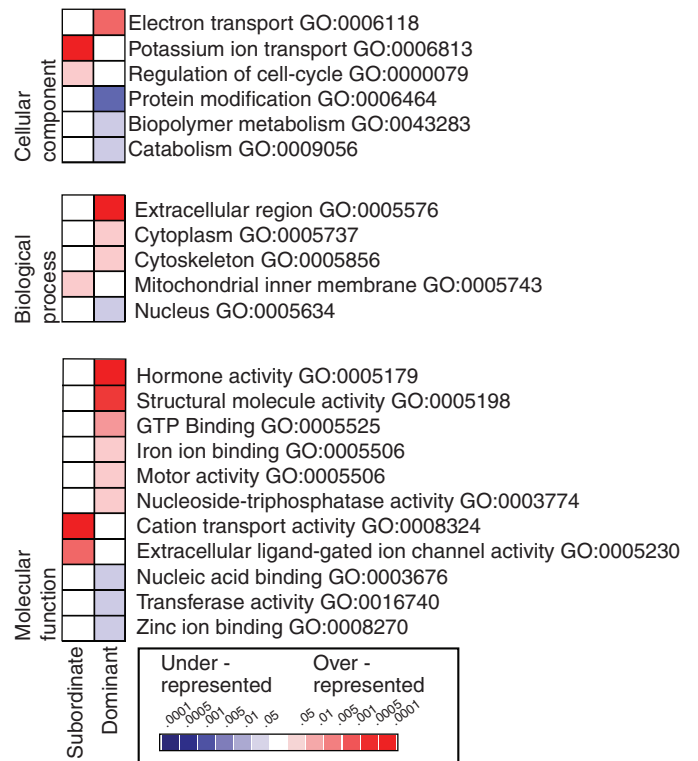


Fig. 3. Analysis, at all Gene Ontology (GO) levels, revealed 22 categories that were statistically over- (red) or under- (blue) represented. The three separate GO vocabularies (molecular function, biological process and cellular location) provide overlapping information, as many of the genes are annotated according to each. *P*-values represent uncorrected results for the hypergeometric test. GO number and name are according to 200605 releases.

of acidic proteins, were upregulated in D males. These are notably found in a wide variety of endocrine and neuro-endocrine cells (for reviews, see Gerst, 1999; Helle, 2004), and the regulation pattern found in the present study may simply be a consequence of increased neuroendocrine activity in D males.

Although few neurotransmitter receptors were present on the array, there is one very intriguing result to report: a GABA-(A) receptor was upregulated in D males whereas at least two subunits of the kainate-type glutamate receptor were upregulated in S males. Clearly, these differences were not predicted nor do we have, at this point, a clear understanding of their specific roles in regulating social dominance. However, the fact that these receptors are affected by (or affect) social phenotypes probably reflects the interconnected nature of neurotransmitter systems and suggests that regulation at all levels of neural circuits may underlie the transition from one social phenotype to another. Interestingly, an antagonistic relationship between GABA and kainate signaling has been suggested in the regulation of reproductive physiology in other systems (e.g. Sagrillo et al., 1996; Chu and Moenter, 2005; Clarkson and Herbison, 2006; Liu et al., 2006) (see Molecular modules underlying dominance and reproduction).

Molecular functions, biological processes and cellular locations

The GO annotation scheme applied to the cichlid microarray allows rigorous statistical analysis for over- and under-representation of particular molecular functions, biological processes, and cellular

locations in genes that are differentially expressed in each male phenotype. Despite the biased nature of the GO terms due to their origin and application in model organisms and directed research, this tool offers a mechanism for statistical analysis of microarray results according to function (Shaw et al., 1999). These terms, unlike specific gene names, avoid experimenter bias and cross-referencing between experiments and even between species and relate experimental results between organisms and platforms. Of the 171 features regulated according to male social phenotype, GO terms could be applied to 85. Analysis at all GO levels revealed 22 categories that are statistically over- or under-represented among the genes that are regulated by social phenotype ($P < 0.05$; compared with their representation among all genes above threshold) (Fig. 3). Using permutation analysis, we determined that only five GO terms were expected to show significant over- or under-representation by chance alone (hypergeometric test $P < 0.05$, only one GO term at $P < 0.01$). Importantly, this unbiased statistical approach confirms our observation discussed earlier that cytoskeleton/structural molecules as well as hormone signaling are upregulated in D males (Table 3). Furthermore, cation/potassium transport pathways appear to be important building blocks for each male phenotype. In D males, the biological processes of GTP binding, iron ion binding and motor activity were significantly enriched, whereas in S males potassium ion transport, regulation of cellular cation transport and ligand-gated ion channel function were activated. Although difficult to interpret directly, this bioinformatic approach results in a considerable data reduction, facilitates comparisons across species and platforms, and provides a framework of hypotheses for future studies on the molecular underpinnings of socially regulated brain function.

Molecular modules underlying dominance and reproduction

The notion that biological entities (e.g. cognitive tasks, developmental programs, neural circuits, metabolic pathways) operate as functional and discrete (i.e. largely non-overlapping) units, or modules, is not new (Fodor, 1983; Redies and Puelles, 2001; Schlosser and Wagner, 2004; Op de Beeck et al., 2008). In molecular systems biology, a module can simply be defined as a set of co-regulated genes or proteins (Segal et al., 2004). Many such modules may serve as building blocks for the assembly of more complex processes. To date, most studies in this area have primarily been concerned with molecular and cellular networks and pathways in simple unicellular systems (Hartwell et al., 1999; Wolf and Arkin, 2003). However, the ultimate challenge in the biology of complex systems is the integration across many levels of biological organization, from molecules to whole organisms, in an ever-changing environment. In the following, we make an initial attempt at such an integration of genomic data with physiological and behavioral phenotypes to provide a comprehensive conceptual framework for understanding phenotypically plastic traits. Specifically, we examine male dominance phenotypes in terms of molecular modules of socially controlled traits such as aggression, territoriality, reproduction and growth.

As we also obtained neural expression profiles of brooding females, we examined variation in transcript levels in relation to sex. 569 genes were regulated according to sex (316 male upregulated, 253 female upregulated) (Table 1), a number that is far greater than that observed for dominance phenotypes within males (171 genes or ~5%). This suggests that while the switch between dominance phenotypes is multifaceted (see Fig. 1), the difference in brain gene expression profiles between males and females is even more dramatic, affecting ~16% of the genes on the array. Interestingly, this proportion is comparable to the 15% observed

difference between alternative mating tactics in males of Atlantic salmon (Aubin-Horth et al., 2005). A considerable proportion of the 171 genes associated with male social phenotypes was also regulated according to sex (supplementary material Tables S1 and S2). However, among the social status-regulated genes, there were similar proportions of female-enriched and male-enriched genes (Fig. 4). Among the 87 dominant upregulated genes, were 11 female-enriched and 20 male-enriched genes (hypergeometric test; $P = 0.09$), and among the 84 subordinate upregulated genes there were 16 female-enriched genes and 21 male-enriched genes (hypergeometric test; $P = 0.13$). In other words, S males do not appear to be molecularly feminized nor are D males simply 'super-males'. This result makes sense in light of the reproductive state of these animals. Although female behavior is, in many ways, similar to that of S males, both brooding females and D males are reproductively active. Furthermore, just as the metabolic demands of maintaining a territory are associated with reduced growth in D males (Hofmann et al., 1999a), mouth-brooding females starve while incubating their offspring and exhibit a marked reduction in body mass (Mrowk, 1984). By contrast, S males do not reproduce, and metabolic energy is directed toward growth (Hofmann et al., 1999a). Thus, the 11 genes (including synaptophysin, neuroserpin and GABA-receptor) upregulated in both D males and brooding females may be part of a module facilitating reproduction and/or reducing growth and may not necessarily be involved in dominance behavior *per se*.

Eighteen of the 316 male-enriched genes were even more highly expressed in D males compared with S males. We suggest that these genes, which include several structural proteins (actin, tubulin, ELF-1) and hormones (GnRH1, AVT, somatolactin, POMC) (supplementary material Table S1) are part of a 'super-male' module, which probably plays a role in the aggressive and/or sexual behaviors typical of the D male (Fig. 4). Even though we know from previous studies using other approaches that the absolute levels of GnRH1 (Francis et al., 1993; White et al., 2002) and GH (Hofmann et al., 1999b) are higher in D males, it is important to note that cDNA microarrays measure only relative transcript levels. Future studies will have to determine whether these genes must be activated in order to produce a dominant phenotype or whether their expression needs to be suppressed for the subordinate phenotype to occur. Following a similar rationale, we suggest that the 21 male-enriched genes (including neuroD and kainate receptor) that were further upregulated in S males relative to D males represent a masculinizing module in some sense. In this case, reduced expression would be critical for the manifestation of behaviors linked to aspects of social dominance and reproduction. Consequently, the 21 genes in this masculinizing module could be considered to be complementary to the super-male module. Finally, as brooding females and S males all display submissive behaviors and very little aggression, it is tempting to suggest that the 16 genes (including natriuretic peptide) expressed in a similar pattern in these two phenotypes are part of a 'subordination module' (Fig. 4).

The opposing pattern of regulation for receptor expression in two classic neurotransmitter systems that we observed between male social phenotypes (see above) is also maintained in relation to sex. The gene encoding a GABA-(A) receptor was upregulated in D males and in females whereas the kainate-type glutamate receptor was upregulated in males in general and particularly in S males. There is a wealth of research that ties the GABA-(A) receptor to the regulation of the hypothalamic-pituitary-gonadal axis *via* integration of steroid feedback to GnRH neurons (for a review, see Sagrillo et al., 1996). In mammals, GABA has mixed inhibitory and excitatory effects on the release of GnRH, due in part to a developmental switch from

Table 3. Gene Ontology (GO) terms that were significantly over- or under-represented among the genes regulated according to male phenotype

A. Biological process			
GO:0006118 Electron transport D>S over-represented $P=1.01 \times 10^{-3}$ (eight of 55)			
TC400	0.9991	Q5RCZ2_PONPY	Similar to secretory vesicle-specific electron transport protein
HH_NB_Harvardcol_000005749	0.9914	Cloned fragment	Brain aromatase
HH_AB_BRAIN2000_000003171	0.9999	Q803D7_BRARE	Sb:cb825 protein (fragment)
HH_AB_BRAIN2000_000001582	0.9997	Q9DEZ3_ORENI	Brain aromatase (fragment)
HH_AB_BRAIN2000_000001970	0.9925	Q6GLW8_XENLA	Hypothetical protein
TC59	0.9988	Q94SU5_9TELE	Cytochrome <i>c</i> oxidase polypeptide II
TC2	>0.9999	COX1_GADMO	NADH dehydrogenase 1
TC9	>0.9999	CYB_TROMR	Cytochrome <i>b</i> family
GO:0006813 Potassium ion transport S>D over-represented $P=4.83 \times 10^{-4}$ (five of 25)			
TC15	>0.9999	Q90279_CARAU	Kainate receptor alpha subunit
TC34	0.9972	Q7ZU25_BRARE	Atp1a1a.1 protein
TC16	0.998	Q90278_CARAU	Kainate receptor β subunit
TC17	>0.9999	Q90278_CARAU	Kainate receptor β subunit
TC139	0.9909	Q9DGL2_BRARE	Na ⁺ /K ⁺ ATPase β subunit
GO:000079 Regulation of cell-cycle S>D over-represented $P=4.76 \times 10^{-2}$ (three of 30)			
TC109	0.9971	SERF2_HUMAN	Small EDRK-rich factor 2
HH_AB_BRAIN2000_000001151	0.9919	RAS_CARAU	Ras-like protein
HH_AB_BRAIN2000_000005191	0.9965	RBM5_HUMAN	RNA-binding protein 5
GO:0006464 Protein modification D>S under-represented $P=1.7 \times 10^{-2}$ (none of 148)			
GO:0043283 Biopolymer metabolism D>S under-represented $P=3.47 \times 10^{-2}$ (two of 161)			
TC42	0.9999	PAB1_HUMAN	Polyadenylate-binding protein 1
HH_AB_BRAIN2000_000004166	0.9992	Q6NX86_BRARE	High mobility group box 1
GO:0009056 Catabolism D>S under-represented $P=3.38 \times 10^{-2}$ (none of 81)			
B. Cellular component			
GO:0005737 Cytoplasm D>S over-represented $P=1.27 \times 10^{-2}$ (23 of 383)			
TC40	0.9997	Q8AVI3_XENLA	Arbp-prov protein
TC236	>0.9999	LDHB_FUNHE	L-lactate dehydrogenase B chain
HH_AB_BRAIN2000_000001815	0.993	Q9I921_CARAU	β -actin
TC2	>0.9999	COX1_GADMO	NADH dehydrogenase 1
TC28	>0.9999	Q9DFT6_9PERC	β -tubulin
TC32	0.9998	Q6PC12_BRARE	Enolase 1 (α)
HH_AB_BRAIN2000_000001970	0.9925	Q6GLW8_XENLA	Hypothetical protein
TC348	>0.9999	RB6A_HUMAN	Ras-related protein Rab-6A
TC118	0.9998	Q9DG82_BRARE	Prosaposin
TC291	0.9987	ACT2_FUGRU	Actin, cytoplasmic 2 (β -actin 2)
HH_AB_BRAIN2000_000002804	0.9995	Q6P4P6_BRARE	Zgc:73142 protein (HMP19 protein)
TC18	>0.9999	Q8UW60_ORENI	Elongation factor 1a
TC42	0.9999	PAB1_HUMAN	Polyadenylate-binding protein 1
TC399	0.9999	Q802G7_BRARE	Selenoprotein M
HH_AB_BRAIN2000_000003171	0.9999	Q803D7_BRARE	Sb:cb825 protein (fragment)
TC37	0.9944	Q6GQM9_BRARE	Enolase 2
HH_AB_BRAIN2000_000003205	0.9947	Q6GNE7_XENLA	MGC82852 protein ribosome receptor activity
HH_AB_BRAIN2000_000003279	0.9905	Q9YHD1_ANGAN	Vacuolar-type H ⁺ transporting ATPase B2 subunit
TC59	0.9988	Q94SU5_9TELE	Cytochrome <i>c</i> oxidase polypeptide II
TC48	0.9934	Q9DFT6_9PERC	β -tubulin
TC9	>0.9999	CYB_TROMR	Cytochrome <i>b</i> family
HH_AB_BRAIN2000_000003055	0.9989	Q5U4S4_XENLA	LOC495448 protein

Table 3 continued

GO:0005856 Cytoskeleton D>S over-represented $P=2.85 \times 10^{-2}$ (seven of 77)			
TC291	0.9987	ACT2_FUGRU	Actin, cytoplasmic 2 (β -actin 2)
HH_AB_BRAIN2000_000001469	0.9967	SEPT7_MOUSE	Septin 7
GO:0005856 Cytoskeleton D>S over-represented $P=2.85 \times 10^{-2}$ (seven of 77)			
TC28	>0.9999	Q9DFT6_9PERC	β -tubulin
TC19	>0.9999	TBA6_HUMAN	α -tubulin 6
TC12	>0.9999	ACT1_FUGRU	cytoplasmic 1 (β -actin 1)
HH_AB_BRAIN2000_000001815	0.993	Q9I921_CARAU	β -actin
TC48	0.9934	Q9DFT6_9PERC	β -tubulin
GO:0005576 Extracellular region D>S over-represented $P=5.25 \times 10^{-6}$ (15 of 106)			
HH_AB_BRAIN2000_000004166	0.9992	Q6NX86_BRARE	High mobility group box 1
TC49	>0.9999	SOMA_ORENI	Somatotropin precursor
HH_AB_BRAIN2000_000003361	0.99	O70534_RAT	ZOG protein
TC124	0.9998	Q6ZM74_BRARE	Similar to synaptophysin
HH_AB_BRAIN2000_000005345	>0.9999	Q9W7F7_OREMO	Proopiomelanocortin
HH_AB_Stanfordcol_000005677	0.9998	Cloned fragment	Arginine vasotocin
TC290	0.9986	GBRA5_HUMAN	GABA receptor α -5 subunit
TC118	0.9998	Q9DG82_BRARE	Prosaposin
TC194	>0.9999	NEUS_CHICK	Neuroserpin precursor
HH_AB_BRAIN2000_000001923	>0.9999	PRL2_OREMO	Prolactin-2 precursor
TC325	>0.9999	PRL1_OREMO	Prolactin-1 precursor
TC331	>0.9999	SOML_PAROL	Somatolactin precursor
TC310	0.9987	Q8JHD7_HAPBU	Arginine vasotocin
HH_AB_Stanfordcol_000005722	>0.9999	Cloned fragment	Arginine vasotocin
TC134	>0.9999	Q9DEI5_OREMO	Glycoprotein α subunit
GO:0005743 Mitochondrial inner membrane S>D over-represented $P=3.07 \times 10^{-2}$ (four of 44)			
TC36	0.9929	Q8JHI0_BRARE	Solute carrier family 25 member 5 protein
TC13	>0.9999	Q8M522_HAPBU	NADH dehydrogenase
TC21	0.9998	Q8HLY8_9SMEG	NADH-ubiquinone oxidoreductase
TC4	>0.9999	Q7YDM6_9LABR	ATP synthase 6
GO:0005634 Nucleus D>S under-represented $P=2.3 \times 10^{-2}$ (five of 275)			
TC12	>0.9999	ACT1_FUGRU	Cytoplasmic 1 (β -actin 1)
TC32	0.9998	Q6PC12_BRARE	Enolase 1 (α)
HH_AB_BRAIN2000_000001906	0.9910	O42448_ONCMY	Id2 protein
HH_AB_BRAIN2000_000003955	0.9919	Q5MBG6_BRARE	ETS family transcription factor efr1
HH_AB_BRAIN2000_000004166	0.9992	Q6NX86_BRARE	High mobility group box 1
C. Molecular function			
GO:0005525 GTP binding D>S over-represented $P=5.23 \times 10^{-3}$ (seven of 56)			
HH_AB_BRAIN2000_000001469	0.9967	SEPT7_MOUSE	Septin 7
TC18	>0.9999	Q8UW60_ORENI	Elongation factor 1a
TC19	>0.9999	TBA6_HUMAN	α -tubulin 6
HH_AB_BRAIN2000_000005599	0.9959	Q6PBW0_BRARE	Hypothetical protein zgc:73218
TC28	>0.9999	Q9DFT6_9PERC	β -tubulin
TC48	0.9934	Q9DFT6_9PERC	β -tubulin
TC348	>0.9999	RB6A_HUMAN	Ras-related protein Rab-6A
GO:0005179 Hormone activity D>S over-represented $P=1.08 \times 10^{-9}$ (nine of 16)			
TC49	>0.9999	SOMA_ORENI	Somatotropin precursor
HH_AB_BRAIN2000_000001923	>0.9999	PRL2_OREMO	Prolactin-2 precursor
TC325	>0.9999	PRL1_OREMO	Prolactin-1 precursor
HH_AB_BRAIN2000_000005345	>0.9999	Q9W7F7_OREMO	Proopiomelanocortin
TC331	>0.9999	SOML_PAROL	Somatolactin precursor
TC310	0.9987	Q8JHD7_HAPBU	Arginine vasotocin
TC134	>0.9999	Q9DEI5_OREMO	Glycoprotein α subunit
HH_AB_Stanfordcol_000005722	>0.9999	Cloned fragment	Arginine vasotocin
HH_AB_Stanfordcol_000005677	0.9998	Cloned fragment	Arginine vasotocin

Table 3 continued

GO:0005506 Iron ion binding D>S over-represented $P=1.05 \times 10^{-2}$ (five of 35)			
TC400	0.9991	Q5RCZ2_PONPY	Similar to secretory vesicle-specific electron transport protein
GO:0005506 Iron ion binding D>S over-represented $P=1.05 \times 10^{-2}$ (five of 35)			
HH_NB_Harvardcol_000005749	0.9914	cloned fragment	Brain aromatase
HH_AB_BRAIN2000_000001582	0.9997	Q9DEZ3_ORENI	Brain aromatase (fragment)
TC2	>0.9999	COX1_GADMO	NADH dehydrogenase 1
TC9	>0.9999	CYB_TROMR	Cytochrome <i>b</i> family
GO:0003374 Motor activity D>S over-represented $P=1.91 \times 10^{-2}$ (three of 15)			
TC291	0.9987	ACT2_FUGRU	Actin, cytoplasmic 2 (β -actin 2)
TC12	>0.9999	ACT1_FUGRU	Cytoplasmic 1 (β -actin 1)
HH_AB_BRAIN2000_000001815	0.993	Q9I921_CARAU	β -actin
GO:001711 Nucleoside-triphosphatase activity D>S over-represented $P=2.50 \times 10^{-2}$ (seven of 75)			
TC18	>0.9999	Q8UW60_ORENI	Elongation factor 1a
TC19	>0.9999	TBA6_HUMAN	α -tubulin 6
HH_AB_BRAIN2000_000005599	0.9959	Q6PBW0_BRARE	Hypothetical protein zgc:73218
TC28	>0.9999	Q9DFT6_9PERC	β -tubulin
HH_AB_BRAIN2000_000003279	0.9905	Q9YHD1_ANGAN	Vacuolar-type H ⁺ transporting ATPase B2 subunit
TC48	0.9934	Q9DFT6_9PERC	β -tubulin
TC348	>0.9999	RB6A_HUMAN	Ras-related protein Rab-6A
GO:0005198 Structural molecule activity D>S over-represented $P=6.53 \times 10^{-4}$ (11 of 93)			
TC40	0.9997	Q8AVI3_XENLA	Arbp-prov protein
TC236	>0.9999	LDHB_FUNHE	L-lactate dehydrogenase B chain
TC291	0.9987	ACT2_FUGRU	Actin, cytoplasmic 2 (β -actin 2)
HH_AB_BRAIN2000_000001469	0.9967	SEPT7_MOUSE	Septin 7
TC19	>0.9999	TBA6_HUMAN	α -tubulin 6
TC12	>0.9999	ACT1_FUGRU	Cytoplasmic 1 (β -actin 1)
HH_AB_BRAIN2000_000005599	0.9959	Q6PBW0_BRARE	Hypothetical protein zgc:73218
TC28	>0.9999	Q9DFT6_9PERC	β -tubulin
HH_AB_BRAIN2000_000001815	0.993	Q9I921_CARAU	β -actin
HH_AB_BRAIN2000_000003205	0.9947	Q6GNE7_XENLA	MGC82852 protein ribosome receptor activity
TC48	0.9934	Q9DFT6_9PERC	β -tubulin
GO:0008324 Cation transporter activity S>D over-represented $P=2.84 \times 10^{-4}$ (nine of 84)			
TC13	>0.9999	Q8M522_HAPBU	NADH dehydrogenase
TC15	>0.9999	Q90279_CARAU	Kainate receptor alpha subunit
TC1	>0.9999	NU1M_BRARE	NADH-ubiquinone oxidoreductase chain 1
TC21	0.9998	Q8HLY8_9SMEG	NADH-ubiquinone oxidoreductase
TC4	>0.9999	Q7YDM6_9LABR	ATP synthase 6
TC34	0.9972	Q7ZU25_BRARE	Atp1a1a.1 protein
TC16	0.998	Q90278_CARAU	Kainate receptor β subunit
TC17	>0.9999	Q90278_CARAU	Kainate receptor β subunit
TC139	0.9909	Q9DGL2_BRARE	Na ⁺ /K ⁺ -ATPase β subunit
GO:0005230 Extracellular ligand-gated ion channel activity S>D over-represented $P=2.78 \times 10^{-3}$ (three of 11)			
TC15	>0.9999	Q90279_CARAU	Kainate receptor α subunit
TC16	0.998	Q90278_CARAU	Kainate receptor β subunit
TC17	>0.9999	Q90278_CARAU	Kainate receptor β subunit
GO:0003676 Nucleic acid binding D>S under-represented $P=3.47 \times 10^{-2}$ (six of 280)			
TC18	>0.9999	Q8UW60_ORENI	Elongation factor 1a
TC32	0.9998	Q6PC12_BRARE	Enolase 1 (α)
TC40	0.9997	Q8AVI3_XENLA	Arbp-prov protein
TC42	0.9999	PAB1_HUMAN	Polyadenylate-binding protein 1
HH_AB_BRAIN2000_000003955	0.9919	Q5MBG6_BRARE	ETS family transcription factor efr1
HH_AB_BRAIN2000_000004166	0.9992	Q6NX86_BRARE	High mobility group box 1
GO:0016740 Transferase activity D>S under-represented $P=1.25 \times 10^{-2}$ (one of 150)			
HH_AB_BRAIN2000_000004040	0.9925	UCKL1_HUMAN	Uridine/cytidine kinase-like 1
GO:0008270 Zinc ion binding D>S under-represented $P=1.13 \times 10^{-2}$ (none of 106)			

Each of the three independent ontologies is given. Significance is determined to be $P < 0.05$ for the uncorrected hypergeometric P -value. TC number refers to 'tentative contig' number assigned in release 1.0 *A. burtoni* cichlid gene index (compbio.dfci.harvard.edu).

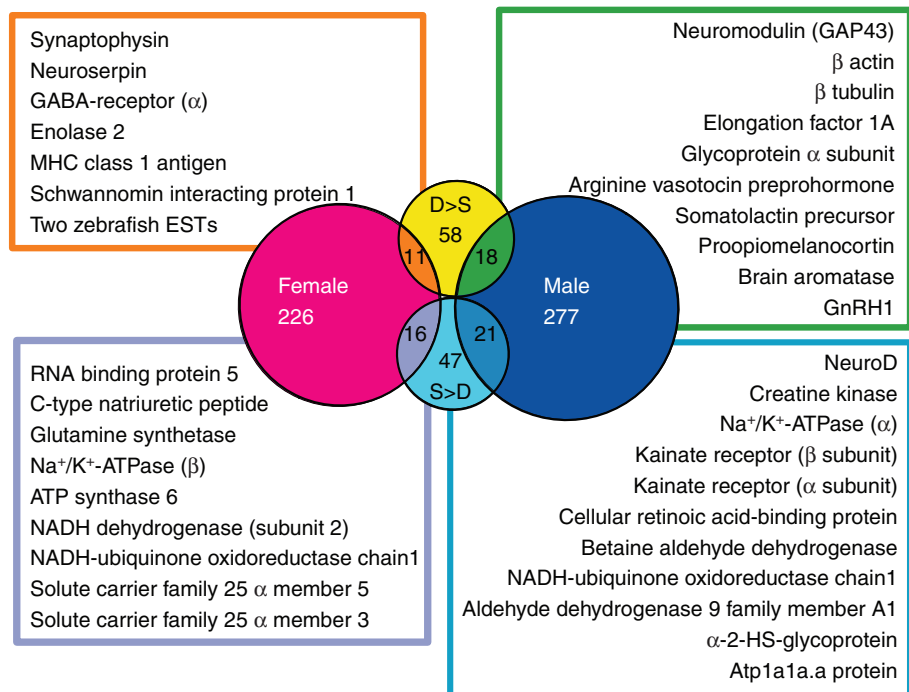


Fig. 4. Venn diagram depicting the relationship of sexually regulated and socially regulated genes. These relationships subdivide the gene classes to indicate modules of gene expression that potentially underlie reproduction (orange), submissive behavior (lavender), and super-male dominance (green) and opposing super-male dominance (teal). Numbers indicate total unique sequences and unsequenced array features. Gene names given represent best-hit blast annotation for available sequences. The Venn diagram indicates regulation at a BPP of ≥ 0.99 , (the specific BPP, down to 0.80, for regulation is indicated in supplementary material Tables S1 and S2)

GABA-(A) receptor depolarization to hyperpolarization (Clarkson and Herbison, 2006). In fish, depending on the species, GABA has either excitatory or inhibitory effects on GnRH release (Trudeau et al., 2000). Interestingly, glutamate-controlled GABA release has been implicated in GnRH regulation (Chu and Moenter, 2005; Clarkson and Herbison, 2006). The kainate system has also been proposed to underlie observed sex differences in the mechanisms of the neural glucocorticoid/stress response. Female mice show less atrophy of hippocampal neurons in response to elevated glucocorticoid levels, possibly due to the increased expression of NMDA, AMPA and kainate glutamate receptor sub-types (Liu et al., 2006). In *A. burtoni*, the increased kainate receptor expression seen in S males could similarly provide a neuroprotective effect against the elevated cortisol levels seen in S males during specific social situations (Fox et al., 1997). Future pharmacological and neurohistochemical experiments will elucidate the mechanistic interactions of these neurotransmitter systems in relation to sex and social behavior.

Taken together, the molecular systems analysis in the present study supports the notion that transcript patterns may indeed be organized in a modular fashion and can be strongly associated with behavioral and/or physiological traits associated with social phenotypes or sex in either concordant or contrasting ways. Additionally, we can exploit expression variation between phenotypes for tentatively annotating gene function and predicting functional roles of these genes.

Individual variation in gene expression

To appreciate the importance of variation in gene expression for phenotypic plasticity, we need to evaluate the expression differences between individuals. To determine the extent to which individuals of the same phenotype differ in their expression profiles, we estimated transcript levels for each individual separately. Individual profiles were then clustered for similarity according to the estimated transcript levels using the gene list that had been identified as significantly regulated between any two phenotypes (BPP >0.99) (Euclidian distance matrix based on resampling for bootstrap confidence levels) (Fig. 5).

Similarities in expression profiles of individuals

Sex was a strong factor in the clustering of individual expression profiles, as five of the six females clustered separately from all males. While males of the same social phenotype tended to have similar brain expression profiles, two D individuals (males 4 and 5) clustered with the S males. The analysis of behavioral data of these males did not suggest any obvious difference from other D males (Fig. 2). It is unlikely (since we controlled for age and size and based on our observations) that these two D males were experiencing dominance for the first time. Also, at the behavior level, these two D males were not similar to each other. While male 5 did show the fewest chases and the most border threats (Fig. 2) of all D males, the behaviors of male 4 were not in any way different from those of the other D males. While it is possible that there is more than one molecular substrate for constructing and maintaining a dominant male phenotype, the expression profiles of these two D males are no more similar to each other than to S males.

When individual profiles were clustered according to estimated transcript levels using all genes on the array that passed filtering for every fish, rather than only those genes that showed significant regulation, similar results were obtained (data not shown). While the bootstrapped confidence values were lower, the same four D males formed a cluster, suggesting that gene regulation according to sex and social status account for the greatest variation among individuals in this study. Principal component analysis (PCA) corroborated this conclusion (supplementary material Fig. S1).

Variation among individuals within and between male phenotypes While, overall, the clustering resulted in a robust separation of the three phenotypes according to sex and social status, the individual variation, already apparent at this level, prompted further inquiry into expression variation between individuals of the same phenotype. In voles, expression patterns of oxytocin receptor for females and vasopressin receptor for males is correlated with individual variation in social and anxiety-related behaviors (Olazabal and Young, 2006). Similarly, male mice show individual variation in estrogen receptor distribution that correlates with aggressive behavior (Trainor et al.,

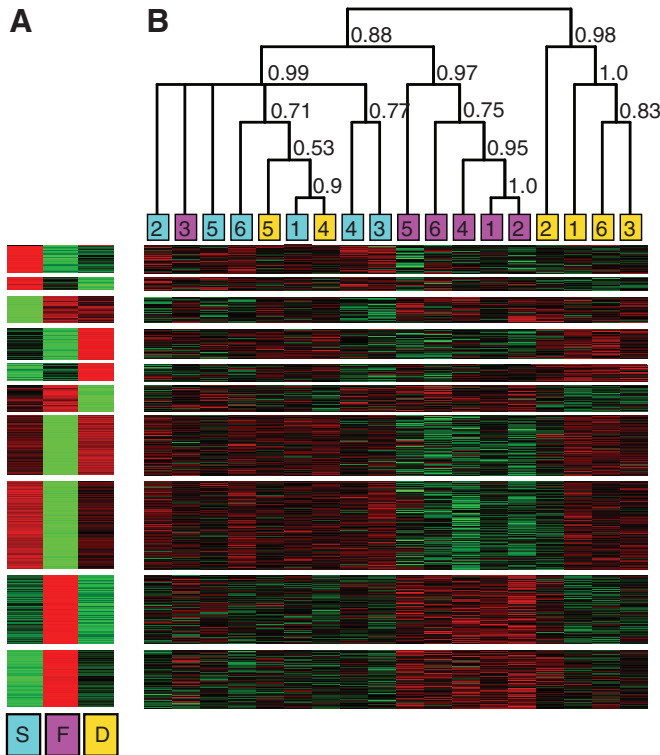


Fig. 5. Hierarchical clustering of phenotypes (A) and individuals (B) (based on expression profiles for the genes regulated at level of phenotype). The genes have been ordered according to *k*-means clustering. The heatmaps (red, upregulated, green, downregulated) show estimated gene expression levels. Heat values are relative only within, not across, genes. The numbers identify individual males consistent with Fig. 2. Confidence values at the nodes were obtained by bootstrap analysis (1000 permutations with resampling). The colors indicate S, subordinate males in teal; D, dominant males in gold; and F, brooding females in pink.

2006). Previous studies in *A. burtoni* and other cichlid species have also reported strong covariation patterns within a social phenotype between the expression of candidate genes and specific phenotype measures [somatostatin correlated with aggression (Trainor and Hofmann, 2006); AVT correlated with hormone titers (Aubin-Horth et al., 2007)]. We therefore asked whether significant differences in gene expression existed between individuals of the same phenotype. Furthermore, we tested whether significant differences in gene expression between individuals of the same phenotype could be found among those genes that are differentially regulated between phenotypes.

In order to investigate the degree of individual variation in gene expression, we determined the number of genes that varied significantly in expression between individuals of the same phenotype and compared it with the number that varied between individuals of different phenotypes. Although statistical power was lower because we had only four technical replicates per individual as opposed to six biological replicates in the analyses above (Clark and Townsend, 2007), we were able to measure the average number of genes significantly regulated ($BPP > 0.99$) in each possible pairwise comparison of two individuals within and between phenotypes. For intra-phenotype variations among males, a mean (\pm s.e.m.) of 82.8 ± 4.5 (2.3% of all genes analyzed) genes varied between any two D males, while a mean of 92.3 ± 4.3 (2.6%) genes varied between any two S males. The identity of these genes was substantially different for each

pairwise comparison, such that 38% of all the array features varied in at least one intra-phenotype comparison. Interestingly, for inter-phenotype variation between individual males, a mean of 132 ± 8.4 (3.6%) genes varied between any two males of differing social phenotype, which was not significantly different from the intra-phenotype variation (*t*-test, $P = 0.13$). Although it is difficult to set an equivalent threshold for significant variation between individuals and between phenotypes, this high degree of individual variation is consistent with other studies that have examined genome-scale individual differences in gene expression in order to study the molecular basis of natural variation. Whitehead and Crawford found that 69% of the metabolic pathway genes showed significant variation between individuals within a population, while only 12% were significantly regulated between populations adapted to different temperatures (Whitehead and Crawford, 2006). Similarly, in yeast, up to 50% of the expressed genes show significantly different levels of expression among individual strains (Brem et al., 2002). Not only do we find a similar number of genes to be regulated between individuals of the same or different phenotypes, we also find no significant difference in coefficient of variation of expression level for sets of these individually regulated genes. This result indicates that absolute gene expression levels vary between individuals of the same phenotype as much as between phenotypes.

While low variation within a phenotype for those genes that define that phenotype can be expected, an alternative hypothesis posits that those genes that define the social phenotype vary across individuals displaying that phenotype in a manner associated with variation in physiological and behavioral traits (e.g. Trainor and Hofmann, 2006; Aubin-Horth et al., 2007; Cummings et al., 2008). In support of this notion, we found a statistically significant over-representation of intra-phenotype regulated genes among those that were regulated by social status (Table 4). Approximately 72% of the 87 genes upregulated in the dominant phenotype were also significantly regulated among individuals within a phenotype (41 among D and 39 among S, 24 of which are shared). Similarly, 64% of the 84 genes that were upregulated in the S phenotype were also significantly regulated among individuals (47 among D and 52 among S, 38 of which are shared). This variation cannot be explained by technical variation in array hybridizations: for a given animal, an array feature must show consistent results across four dye-reversed hybridizations before it can be identified as regulated across individuals according to our statistical analysis. Rather, the results of the present study show that even considerable and potentially important within-phenotype variation in gene expression can give rise to reliable and readily identifiable between-phenotype differences. Future integrative studies will help determine whether the observed variation between individuals is caused by, or causes, subtle phenotypic differences or represents a dramatic, alternative molecular mechanism for constructing the same phenotype.

Table 4. Enrichment of intra-phenotype gene expression variation is significant for genes that are both upregulated and downregulated for that phenotype in comparison with the other phenotype

	Upregulated by phenotype	
	Dominant	Subordinate
Regulated by individual	87	84
w/in dominant	824	41 ($P = 2.9 \times 10^{-7}$)
w/in subordinate	925	47 ($P = 2.76 \times 10^{-11}$)
		52 ($P = 1.2 \times 10^{-12}$)

Hypergeometric test (3598 total genes analyzed).

CONCLUSIONS

By including candidate genes on the microarray, we have validated the discovery-based approach that identifies the gene expression patterns for reproductively active D males and reproductively suppressed S males as well as for brooding females. While the regulation of neuroendocrine genes was predicted from previous research, the unexpected and novel discovery of opposing roles for two classic neurotransmitter systems opens exciting new avenues for future research. Furthermore, the increased neuronal remodeling activity in D males suggests that the known neuroanatomical changes observed in pre-optic GnRH and somatostatin neurons may extend to other cell types and/or additional brain regions. Using the GO framework to interrogate the data for statistical significance reinforces the importance of hormonal regulation and highlights the hitherto under-appreciated roles of cytoskeletal components in addition to neurotransmitter pathways. Interestingly, expression profiles vary among individuals within a male phenotype for roughly the same number of genes and with similar magnitudes of transcript abundance as seen between male phenotypes. Specifically, there is a surprisingly high level of variation among those genes that molecularly define the very phenotypes in the first place. Taken together, our genome-scale analysis of molecular systems in the brain has identified complex patterns of gene expression that are associated with a socially regulated switch in behavioral phenotype.

LIST OF ABBREVIATIONS

AMPA	alpha-amino-3-hydroxy-5-methyl-4-isoxazolepropionic acid
AVP	arginine vasopressin
AVT	arginine vasotocin
BPP	Bayesian posterior probability
CF	condition factor
CCK	cholecystokinin
DAG	directed acyclic graphs
DI	dominance index
EST	expressed sequence tags
FDR	false discovery rate
GABA	gamma-aminobutyric acid
GH	growth hormone
GHRH	growth hormone-releasing hormone
GnRH	gonadotrophin-releasing hormone
GO	gene ontology
GR	growth rate
GSI	gonadosomatic index
IEA	inferred electronic annotation
ISS	inferred sequence similarity
KT	ketotestosterone
NMDA	N-methyl-D-aspartic acid
POA	pre-optic area
POMC	proopiomelanocortin
RI	reproductive index
T	testosterone
TC	tentative contigs

All authors contributed to the design, implementation, analysis and presentation of this experimental data set. We are grateful to Josiah Altschuler and Melinda Snitow for animal care, Sarah Annis for assistance with the behavioral experiments, Christian Landry for programming and photography, Amir Karger for bioinformatics advice, and Victoria Zero, Brian Dias, Lin Huffman and Kim Hoke for comments on earlier versions of this manuscript. We thank H. Hofmann laboratory and the members of the Bauer Center for Genomics Research for stimulating discussions. This research was supported by an NRSA post-doctoral fellowship to S.C.P.R., a postdoctoral fellowship from FQRNT (Fonds Québécois de la Recherche sur la Nature et les Technologies) and a postdoctoral fellowship from the Natural Science and Engineering Research Council of Canada (NSERC) to N.A.H., and by National Institutes of Health grant NIGMS GM068763, the Bauer Center for Genomics Research (H.A.H.).

REFERENCES

- Amano, M., Hyodo, S., Kitamura, S., Ikuta, K., Suzuki, Y., Urano, A. and Aida, K. (1995). Short photoperiod accelerates preoptic and ventral telencephalic salmon GnRH synthesis and precocious maturation in underyearling male masu salmon. *Gen. Comp. Endocrinol.* **99**, 22-27.
- Arnold, A. P. (1992). Hormonally-induced alterations in synaptic organization in the adult nervous-system. *Exp. Gerontol.* **27**, 99-110.
- Au, T. M., Anna, K. G. and Fernald, R. D. (2006). Differential social regulation of two pituitary gonadotropin-releasing hormone receptors. *Behav. Brain Res.* **170**, 342-346.
- Aubin-Horth, N., Landry, C. R., Letcher, B. H. and Hofmann, H. A. (2005). Alternative life histories shape brain gene expression profiles in males of the same population. *Proc. R. Soc. Lond. B* **272**, 1655-1662.
- Aubin-Horth, N., Desjardins, J. K., Martei, Y. M., Balshine, S. and Hofmann, H. A. (2007). Masculinized dominant females in a cooperatively breeding species. *Mol. Ecol.* **16**, 1349-1358.
- Black, M. P., Balthazart, J., Baillien, M. and Grober, M. S. (2005). Socially induced and rapid increases in aggression are inversely related to brain aromatase activity in a sex-changing fish, *Lythrypnus dalli*. *Proc. Biol. Sci.* **272**, 2435-2440.
- Brem, R. B., Yvert, G., Clinton, R. and Kruglyak, L. (2002). Genetic dissection of transcriptional regulation in budding yeast. *Science* **296**, 752-755.
- Buckley, B. A., Gracey, A. Y. and Somero, G. N. (2006). The cellular response to heat stress in the goby *Gillichthys mirabilis*: a cDNA microarray and protein-level analysis. *J. Exp. Biol.* **209**, 2660-2677.
- Burmeister, S. S., Jarvis, E. D. and Fernald, R. D. (2005). Rapid behavioral and genomic responses to social opportunity. *PLoS Biol.* **3**, 1996-2004.
- Burmeister, S. S., Kailasanath, V. and Fernald, R. D. (2007). Social dominance regulates androgen and estrogen receptor gene expression. *Horm. Behav.* **51**, 164-170.
- Carneiro, L. A., Oliveira, R. F., Canario, A. V. M. and Grober, M. S. (2003). The effect of arginine vasotocin on courtship behaviour in a biennial fish with alternative reproductive tactics. *Fish Physiol. Biochem.* **28**, 241-243.
- Churchill, G. A. (2002). Fundamentals of experimental design for cDNA microarrays. *Nat. Genet.* **32**, 490-495.
- Chu, Z. G. and Moenter, S. M. (2005). Endogenous activation of metabotropic glutamate receptors modulates GABAergic transmission to gonadotropin-releasing hormone neurons and alters their firing rate: a possible local feedback circuit. *J. Neurosci.* **25**, 5740-5749.
- Clark, T. A. and Townsend, J. P. (2007). Quantifying variation in gene expression. *Mol. Ecol.* **16**, 2613-2616.
- Clarkson, J. and Herbison, A. E. (2006). Development of GABA and glutamate signaling at the GnRH neuron in relation to puberty. *Mol. Cell. Endocrinol.* **254**, 32-38.
- Cummings, M. E., Larkins-Ford, J., Reilly, C. R. L., Wong, R. Y., Ramsey, M. and Hofmann, H. A. (2008). Sexual and social stimuli elicit rapid and contrasting genomic responses. *Proc. Biol. Sci.* **275**, 393-402.
- Davis, M. R. and Fernald, R. D. (1990). Social control of neuronal soma size. *J. Neurobiol.* **21**, 1180-1188.
- Dawson, A., King, V. M., Bentley, G. E. and Ball, G. F. (2001). Photoperiodic control of seasonality in birds. *J. Biol. Rhythms* **16**, 365-380.
- Devoogd, T. and Nottebohm, F. (1981). Gonadal-hormones induce dendritic growth in the adult avian brain. *Science* **214**, 202-204.
- Fernald, R. D. (1977). Quantitative behavioural observations of *Haplochromis burtoni* under semi-natural conditions. *Anim. Behav.* **25**, 643-653.
- Fernald, R. D. (2002). Social regulation of the brain: sex, size and status. In *Genetics and Biology of Sex Determination* no. 244 (ed. Novartis Foundation), pp. 169-186. Chichester: John Wiley and Sons.
- Fernald, R. D. (2004). Social influences on the brain. *Horm. Behav.* **46**, 129-130.
- Fernald, R. D. and Hirata, N. R. (1977a). Field study of *Haplochromis burtoni*: quantitative behavioral observations. *Anim. Behav.* **25**, 964-975.
- Fernald, R. D. and Hirata, N. R. (1977b). Field study of *Haplochromis burtoni*: habitats and co-habitants. *Environ. Biol. Fishes* **2**, 299-308.
- Fodor, J. A. (1983). *The Modularity of Mind*. Cambridge, MA: The MIT Press.
- Forsyth, I. A. and Wallis, M. (2002). Growth hormone and prolactin-molecular and functional evolution. *J. Mammary Gland Biol. Neoplasia* **7**, 291-312.
- Fox, H. E., White, S. A., Kao, M. H. F. and Fernald, R. D. (1997). Stress and dominance in a social fish. *J. Neurosci.* **17**, 6463-6469.
- Francis, R. C., Soma, K. and Fernald, R. D. (1993). Social regulation of the brain pituitary-gonadal axis. *Proc. Natl. Acad. Sci. USA* **90**, 7794-7798.
- Fukamachi, S. and Sugimoto, M. (2004). Identification of the gene for morphological body-color change: Somatolactin. *Zool. Sci.* **21**, 1224.
- Gabriel, S. M., Koenig, J. I. and Washton, D. L. (1993). Estrogen stimulation of galanin gene-expression and galanin-like immunoreactivity in the rat and its blockade by the estrogen antagonist keoxifene. *Regul. Pept.* **45**, 407-419.
- Ge, Y. C., Dudoit, S. and Speed, T. P. (2003). Resampling-based multiple testing for microarray data analysis. *Test* **12**, 1-77.
- Gerst, J. E. (1999). SNAREs and SNARE regulators in membrane fusion and exocytosis. *Cell. Mol. Life Sci.* **55**, 707-734.
- Goodson, J. L. (1998). Territorial aggression and dawn song are modulated by septal vasotocin and vasoactive intestinal polypeptide in male field sparrows (*Spizella pusilla*). *Horm. Behav.* **34**, 67-77.
- Goodson, J. L. and Adkins-Regan, E. (1999). Effect of intraseptal vasotocin and vasoactive intestinal polypeptide infusions on courtship song and aggression in the male zebra finch (*Taeniopygia guttata*). *J. Neuroendocrinol.* **11**, 19-25.
- Goodson, J. L. and Bass, A. H. (2001). Social behavior functions and related anatomical characteristics of vasotocin/vasopressin systems in vertebrates. *Brain Res. Rev.* **35**, 246-265.
- Greenwood, A. K. and Fernald, R. D. (2004). Social regulation of the electrical properties of gonadotropin-releasing hormone neurons in a Cichlid fish (*Astatotilapia burtoni*). *Biol. Reprod.* **71**, 909-918.

- Greenwood, A. K., Wark, A. R., Fernald, R. D. and Hofmann, H. A. (2008). Arginine vasotocin mediates both dominant and subordinate behavior via two distinct preoptic pathways. *Proc. Biol. Sci.* doi:10.1098/rspb.2008.0622
- Grober, M. S., George, A. A., Watkins, K. K., Carneiro, L. A. and Oliveira, R. F. (2002). Forebrain AVT and courtship in a fish with male alternative reproductive tactics. *Brain Res. Bull.* **57**, 423-425.
- Grozinger, C. M. and Robinson, G. E. (2002). Microarray analysis of pheromone-mediated gene expression in the honey bee brain. *Integr. Comp. Biol.* **42**, 1237-1237.
- Hallgren, S. L. E., Linderoth, M. and Olsen, K. H. (2006). Inhibition of cytochrome p450 brain aromatase reduces two male specific sexual behaviours in the male Enderl guppy (*Poecilia reticulata*). *Gen. Comp. Endocrinol.* **147**, 323-328.
- Hartwell, L. H., Hopfield, J. J., Leibler, S. and Murray, A. W. (1999). From molecular to modular cell biology. *Nature* **402**, C47-C52.
- Helle, K. B. (2004). The granin family of uniquely acidic proteins of the diffuse neuroendocrine system: comparative and functional aspects. *Biol. Rev.* **79**, 769-794.
- Hofmann, H. A. (2003). Functional Genomics of Neural and Behavioral Plasticity. *J. Neurobiol.* **54**, 272-282.
- Hofmann, H. A. (2006). GnRH signaling in behavioral plasticity. *Curr. Opin. Neurobiol.* **16**, 343-350.
- Hofmann, H. A. and Fernald, R. D. (2000). Social status controls somatostatin neuron size and growth. *J. Neurosci.* **20**, 4740-4744.
- Hofmann, H. A., Benson, M. E. and Fernald, R. D. (1999a). Social status regulates growth rate: Consequences for life-history strategies. *Proc. Natl. Acad. Sci. USA* **96**, 14171-14176.
- Hofmann, H. A., Le Bail, P. Y. and Fernald, R. D. (1999b). Social control of growth and growth hormone levels in an African cichlid fish. *Abstr. - Soc. Neurosci.* **29**, 348.16.
- Holmes, A., Yang, R. J. and Crawley, J. N. (2002). Evaluation of an anxiety-related phenotype in galanin overexpressing transgenic mice. *J. Mol. Neurosci.* **18**, 151-165.
- Jadhao, A. and Pinelli, C. (2001). Galanin-like immunoreactivity in the brain and pituitary of the 'four-eyed' fish, *Anableps anableps*. *Cell Tissue Res.* **306**, 309-318.
- Johnsson, M., Axelsson, M. and Holmgren, S. (2001). Large veins in the Atlantic cod (*Gadus morhua*) and the rainbow trout (*Oncorhynchus mykiss*) are innervated by neuropeptide-containing nerves. *Anat. Embryol.* **204**, 109-115.
- Kageyama, H., Takenoya, F., Kita, T., Hori, T., Guan, H. L. and Shioda, S. (2005). Galanin-like peptide in the brain: effects on feeding energy metabolism and reproduction. *Regul. Pept.* **126**, 21-26.
- Kocher, T. D. (2004). Adaptive evolution and explosive speciation: The cichlid fish model. *Nat. Rev. Genet.* **5**, 288-298.
- Legac, F., Blaise, O., Fostier, A., Le Bail, P. Y., Loir, M., Mouro, B. and Weil, C. (1993). Growth-Hormone (GH) and Reproduction - a review. *Fish Physiol. Biochem.* **11**, 219-232.
- Lim, M. M., Hammock, E. A. and Young, L. J. (2004). The role of vasopressin in the genetic and neural regulation of monogamy. *J. Neuroendocrinol.* **16**, 325-332.
- Liu, H. H., Payne, H. R., Wang, B. and Brady, S. T. (2006). Gender differences in response of hippocampus to chronic glucocorticoid stress: Role of glutamate receptors. *J. Neurosci. Res.* **83**, 775-786.
- Maan, M. E., Eshuis, B., Haesler, M. P., Schneider, M. V., Van Alphen, J. J. M. and Seehausen, O. (2008). Color polymorphism and predation in a Lake Victoria cichlid fish. *Copeia*. **2008** (3), 621-629.
- Madani, R., Kosloz, S., Akhmedov, A., Cinelli, P., Kinter, J., Lipp, H. P., Sonderegger, P. and Wolfer, D. P. (2003). Impaired explorative behavior in neophobia in genetically modified mice lacking or overexpressing the extracellular serine protease inhibitor neuroserpin. *Mol. Cell. Neurosci.* **23**, 473-494.
- Maere, S., Heymans, K. and Kuiper, M. (2005). BiNGO: a Cytoscape plugin to assess overrepresentation of Gene Ontology categories in Biological Networks. *Bioinformatics* **21**, 3448-3449.
- Marsh, K. E., Creutz, L. M., Hawkins, M. B. and Godwin, J. (2006). Aromatase immunoreactivity in the bluehead wrasse brain, *Thalassoma bifasciatum*: Immunolocalization and co-regionalization with arginine vasotocin and tyrosine hydroxylase. *Brain Res.* **1126**, 91-101.
- Martynyuk, C. J., Xiong, H. L., Crump, K., Chiu, S., Sardana, R., Nadler, A., Gerrie, E. R., Xia, X. H. and Trudeau, V. L. (2006). Gene expression profiling in the neuroendocrine brain of male goldfish (*Carassius auratus*) exposed to 17 alpha-thinyloestradiol. *Physiol. Genomics* **27**, 328-336.
- Miranda, E. and Lomas, D. A. (2006). Neuroserpin: a serpin to think about. *Cell. Mol. Life Sci.* **63**, 709-722.
- Mrowk, A. (1984). Brood care motivation and hunger in the mouth brooding cichlid *Pseudochrenilabrus multicolor*. *Behav. Processes* **9**, 181-190.
- Munz, H. (1999). GnRH-systems in the forebrain of cichlid fish. *Eur. J. Morphol.* **37**, 100-102.
- Nakamura, M. and Kobayashi, Y. (2005). Sex change in coral reef fish. *Fish Physiol. Biochem.* **31**, 117-122.
- Nelson, R. J. (2005). *An Introduction to Behavioral Endocrinology*. 3rd edn. Sunderland, MA: Sinauer Associates.
- Olazabal, D. E. and Young, L. J. (2006). Oxytocin receptors in the nucleus accumbens facilitate 'spontaneous' maternal behavior in adult female prairie voles. *Neuroscience* **141**, 559-568.
- Oliveira, R. F., Hirschenhauser, K., Carneiro, L. A. and Canario, A. V. M. (2002). Social modulation of androgen levels in male teleost fish. *Comp. Biochem. Physiol. B, Biochem. Mol. Biol.* **132**, 203-215.
- Op de Beek, H. P., Haushofer, J. and Kanwisher, N. G. (2008). Interpreting fMRI data: maps, modules and dimensions. *Nat. Rev. Neurosci.* **9**, 123-135.
- Parhar, I. S., Ogawa, S. and Sakuma, Y. (2005). Three GnRH receptor types in laser-captured single cells of the cichlid pituitary display cellular and functional heterogeneity. *Proc. Natl. Acad. Sci. USA* **102**, 2204-2209.
- Parikh, V. N., Clement, T. S. and Fernald, R. D. (2006). Androgen level and male social status in the African cichlid, *Astatotilapia burtoni*. *Behav. Brain Res.* **166**, 291-295.
- Pollen, A. A., Dobberfuhl, A. P., Scace, J., Igulu, M. M., Renn, S. C. P., Shumway, C. A. and Hofmann, H. A. (2007). Environmental complexity and social organization sculpt the brain in Lake Tanganyikan cichlid fish. *Brain Behav. Evol.* **70**, 21-39.
- R Development Core Team (2006). R: A language and environment for statistical computing. R. Foundation for Statistical Computing, Vienna, Austria. (<http://www.R-project.org>)
- Redies, C. and Puelles, L. (2001). Modularity in vertebrate brain development and evolution. *BioEssays* **23**, 1100-1111.
- Renn, S. C. P., Aubin-Horth, N. and Hofmann, H. A. (2004). Biologically meaningful expression profiling across species using heterologous hybridization to a cDNA microarray. *BMC Genomics* **5**, 42.
- Rhodes, J. S. and Crabbe, J. C. (2005). Gene expression induced by drugs of abuse. *Curr. Opin. Pharmacol.* **5**, 26-33.
- Robinson, G. E., Grozinger, C. M. and Whitfield, C. W. (2005). Sociogenomics: Social life in molecular terms. *Nat. Rev. Genet.* **6**, 257-270.
- Sagrillo, C. A., Grattan, D. R., McCarthy, M. M. and Selmanoff, M. (1996). Hormonal and neurotransmitter regulation of GnRH gene expression and related reproductive behaviors. *Behav. Genet.* **26**, 241-277.
- Salzburger, W., Mack, T., Verheyen, E. and Meyer, A. (2005). Out of Tanganyika: genesis, explosive speciation, key-innovations and phylogeography of the haplochromine cichlid fishes. *BMC Evol. Biol.* **5**, 15.
- Salzburger, W., Renn, S. C. P., Steinke, D., Hofmann, H. A., Braasch, I. and Meyer, A. (2008). Annotation of expressed sequence tags for the East African cichlid fish species *Astatotilapia burtoni* and evolutionary analyses of cichlid ORFs. *BMC Genomics* **9**, 96-110.
- Santangelo, N. and Bass, A. H. (2006). New insights into neuropeptide modulation of aggression: field studies of arginine vasotocin in a territorial tropical damselfish. *Proc. Biol. Sci.* **273**, 3085-3092.
- Sapolsky, R. M. (2005). The influence of social hierarchy on primate health. *Science* **308**, 648-652.
- Schick, R. R., Samsai, S., Zimmermann, J. P., Eberl, T., Endres, C., Schusdziarra, V. and Classen, M. (1993). Effect of galanin on food-intake in rats-involvement of lateral and ventromedial hypothalamic sites. *Am. J. Physiol.* **264**, R355-R361.
- Schlösser, G. and Wagner, G. P. (ed.) (2004). *Modularity in Development and Evolution*. Chicago: University Of Chicago Press.
- Segal, E., Friedman Koller, D. and Regev, A. (2004). A module map showing conditional activity of expression modules in cancer. *Nat. Genet.* **36**, 1090-1098.
- Semzar, K. and Godwin, J. (2003). Social influences on the arginine vasotocin system are independent of gonads in a sex-changing fish. *J. Neurosci.* **23**, 4386-4393.
- Semzar, K. and Godwin, J. (2004). Multiple mechanisms of phenotype development in the bluehead wrasse. *Hormones and Behavior* **45**, 345-353.
- Shannon, P., Markiel, A., Ozier, O., Baliga, N. S., Wang, J. T., Ramage, D., Amin, N., Schwikowski, B. and Ideker, T. (2003). Cytoscape: a software environment for integrated models of biomolecular interaction networks. *Genome Res.* **13**, 2498-2504.
- Shaw, D. R., Ashburner, M., Blake, J. A., Baldarelli, R. M., Botstein, D., Davis, A. P., Cherry, J. M., Lewis, S., Lutz, C. M., Richardson, J. E. et al. (1999). Gene ontology: a controlled vocabulary to describe the function, biological process and cellular location of gene products in genome databases. *Am. J. Hum. Genet.* **65**, A419.
- Silverin, B., Baillien, M. and Balthazart, J. (2004). Territorial aggression, circulating levels of testosterone, and brain aromatase activity in free-living pied flycatchers. *Horm. Behav.* **45**, 225-234.
- Simerly, R. B. (2002). Wired for reproduction: organization and development of sexually dimorphic circuits in the mammalian forebrain. *Annu. Rev. Neurosci.* **25**, 507-536.
- Smyth, G. K., Thorne, N. P. and Wettenhall, J. (2004). LIMMA: Linear Models for Microarray Data, Version 1.6.6. User's Guide [<http://bioinf.wehi.edu.au/limma/>].
- Sokal, R. R. and Rohlf, F. J. (1995). *Biometry: The Principles and Practice of Statistics in Biological Research*. 3rd edn. New York: W.H. Freeman.
- Soma, K. K., Francis, R. C., Wingfield, J. C. and Fernald, R. D. (1996). Androgen regulation of hypothalamic neurons containing gonadotropin-releasing hormone in a cichlid fish: Integration with social cues. *Horm. Behav.* **30**, 216-226.
- Soma, K. K., Schlinger, B. A., Wingfield, J. C. and Saldanha, C. J. (2003). Brain aromatase, 5 alpha-reductase, and 5 beta-reductase change seasonally in wild male song sparrows: relationship to aggressive and sexual behavior. *J. Neurobiol.* **56**, 209-221.
- Sorensen, C., Overli, O., Summers, C. H. and Nilsson, G. E. (2007). Social regulation of neurogenesis in teleosts. *Brain Behav. Evol.* **70**, 239-246.
- The Gene Ontology Consortium (2000). Gene ontology: tool for the unification of biology. *Nat. Genet.* **25**, 25-29.
- Tortorella, C., Neri, G. and Nussdorfer, G. G. (2007). Galanin in the regulation of the hypothalamic-pituitary-adrenal axis (Review). *Int. J. Mol. Med.* **19**, 639-647.
- Townsend, J. P. and Hartl, D. L. (2002). Bayesian analysis of gene expression levels: statistical quantification of relative mRNA level across multiple strains or treatments. *Genome Biol.* **3**, research0071.1-0071.16.
- Trainor, B. C. and Hofmann, H. A. (2006). Somatostatin regulates aggressive behavior in an African cichlid fish. *Endocrinology* **147**, 5119-5125.
- Trainor, B. C. and Hofmann, H. A. (2007). Somatostatin and somatostatin receptor gene expression in dominant and subordinate males of an African cichlid fish. *Behav. Brain Res.* **179**, 314-320.
- Trainor, B. C., Kyomen, H. H. and Marler, C. A. (2006). Estrogenic encounters: How interactions between aromatase and the environment modulate aggression. *Front. Neuroendocrinol.* **27**, 170-179.
- Trudeau, V. L., Spanswick, D., Fraser, E. J., Lariviere, K., Crump, D., Chiu, S., MacMillan, M. and Schulz, R. W. (2000). The role of amino acid neurotransmitters in the regulation of pituitary gonadotropin release in fish. *Biochem. Cell Biol.* **78**, 241-259.
- Volkoff, H., Canosa, L. F., Unniappan, S., Cerda-Reverter, J. M., Bernier, N. J., Kelly, S. P. and Peter, R. E. (2005). Neuropeptides and the control of food intake in fish. *Gen. Comp. Endocrinol.* **142**, 3-19.

- White, S. A., Bond, C. T., Francis, R. C., Kasten, T. L., Fernald, R. D. and Adelman, J. P.** (1994). A 2nd gene for gonadotropin-releasing-hormone-cDNA and expression pattern in the brain. *Proc. Natl. Acad. Sci. USA* **91**, 1423-1427.
- White, S. A., Nguyen, T. and Fernald, R. D.** (2002). Social regulation of gonadotropin-releasing hormone. *J. Exp. Biol.* **205**, 2567-2581.
- Whitehead, A. and Crawford, D. L.** (2006). Variation within and among species in gene expression: raw material for evolution. *Mol. Ecol.* **15**, 1197-1211.
- Whitfield, C. W., Cziko, A. M. and Robinson, G. E.** (2003). Gene expression profiles in the brain predict behavior in individual honey bees. *Science* **302**, 296-299.
- Wiesenfeldhallin, Z., Xu, X. J., Langel, U., Bedecs, K., Hokfelt, T. and Bartfai, T.** (1992). Galanin-mediated control of pain-enhanced role after nerve injury. *Proc. Natl. Acad. Sci. USA* **89**, 3334-3337.
- Winslow, J. T., Hastings, N., Carter, C. S., Harbaugh, C. R. and Insel, T. R.** (1993). A role for central vasopressin in pair bonding in monogamous prairie voles. *Nature* **365**, 545-548.
- Wolf, D. M. and Arkin, A. P.** (2003). Motifs, modules and games in bacteria. *Curr. Opin. Microbiol.* **6**, 125-134.
- Wu, H., Kerr, M. K., Cui, X. and Churchill, G. A.** (2002). MAANOVA: a software package for the analysis of spotted cDNA microarray experiments. In *The Analysis of Gene Expression Data: Methods and Software* (ed. G. Parmigiani, E. S. Garrett, R. A. Irizarry and S. L. Zeger), pp. 313-341. New York: Springer-Verlag.
- Yu, K. L. and Peter, R. E.** (1991). Changes in brain levels of gonadotropin-releasing-hormone and serum levels of gonadotropin and growth-hormone in goldfish during spawning. *Can. J. Zool.* **69**, 182-188.

Table S1. Array feature or tentative contig (TC) identification for genes significantly upregulated in dominant (D) males relative to subordinate (S) males

Array feature ID or contig #	BPP D>S	Best BLAST hit SwissProt	Gene annotation	BPP regulated by sex	GenBank accession number	
1	TC310	0.9987	Q8JHD7_HAPBU	Arginine vasotocin	M>F 0.9968	CN470612
	hh_Ab_Brain2000_000001582	0.9997	Q9DEZ3_ORENI	Brain aromatase (fragment)	M>F >0.9999	CN471302
5	hh_Ab_StanfordCol_000005677	0.9998	cloned fragment	GnRH-I	M>F >0.9999	AF076961 CN468688 CN471162 CN471154
	TC290	0.9986	GBRA5_HUMAN	GABA receptor α -5 subunit	F>M 0.9984	CN469306 CN469290
7	TC134	>0.9999	Q9DEI5_OREMO	Glycoprotein α subunit	M>F 0.9952	CN471154 CN471162 CN468688
8	TC325	>0.9999	PRL1_OREMO	Prolactin-1 precursor	M>F 0.9015	CN469517 CN468871
9	hh_Ab_Brain2000_000001923	>0.9999	PRL2_OREMO	Prolactin-2 precursor	M>F 0.9723	CN470226
10	hh_Ab_Brain2000_000005345	>0.9999	Q9W7F7_OREMO	Proopiomelanocortin	M>F 0.9902	CN471347
11	TC331	>0.9999	SOML_PAROL	Somatolactin precursor	M>F 0.9987	CN469559 CN468979
12	TC49	>0.9999	SOMA_ORENI	Somatotropin precursor	M>F 0.9878	CN469175 CN471577 CN468898 CN469266 CN471127
13	hh_Ab_Brain2000_000000063	0.9974	Q5XJN4_BRARE	Chromogranin A		CN468884
14	TC280	>0.9999	Q90X80_GILMI	Neurogranin.	F>M 0.9852	CN468740 CN469492
15	hh_Ab_Brain2000_000004567	0.9997	Q6GV68_CTEID	Secretogranin II	F>M 0.9443	CN471695
16	TC57	>0.9999	Q6GV68_CTEID	Secretogranin II	F>M 0.8968	CN470325 CN470198
	TC291	0.9987	ACT2_FUGRU	Actin, cytoplasmic 2 (β - actin 2)	M>F 0.9997	CN469815 CN469630
17	TC12	>0.9999	ACT1_FUGRU	cytoplasmic 1 (β -actin 1)	M>F >0.9999	CN471720 CN471184 CN470181 CN470478 CN469932 CN470091 CN471424 CN470767 CN469235 CN469780 CN470859 CN472199
18	hh_Ab_Brain2000_000001815	0.9930	Q9I921_CARAU	β actin	M>F 0.9986	CN469000
	TC19	>0.9999	TBA6_HUMAN	α -tubulin 6	M>F >0.9999	CN471416 CN469313 CN470748 CN468803 CN468852 CN468794 CN470107
20	TC28	>0.9999	Q9DFT6_9PERC	β -tubulin	M>F >0.9999	CN469968 CN470742 CN471092 CN471098 CN470816 CN471441 CN469643
21	TC48	0.9934	Q9DFT6_9PERC	β -tubulin	M>F >0.9999	CN469310 CN468689 CN470388 CN470930
	TC18	>0.9999	Q8UW60_ORENI	Elongation factor 1a	M>F 0.9992	CN469974 CN468720 CN469360 CN468743 CN470391 CN471647 CN471420 CN471679 CN471413 CN470469
23	hh_Ab_Brain2000_000001469	0.9967	SEPT7_MOUSE	Septin 7	M>F 0.9757	CN469638
	TC400	0.9991	Q5RCZ2_PONPY	Similar to secretory vesicle-specific electron transport protein	F>M 0.9871	CN472112 CN469589
25	TC124	0.9998	Q6ZM74_BRARE	Similar to synaptophysin	F>M 0.9936	CN469752 CN471251 CN470421
	hh_Ab_Brain2000_000003955	0.9919	Q5MBG6_BRARE	ETS family transcription factor efr1		CN471429
27	hh_Ab_Brain2000_000001026	0.9979	NEUM_CARAU	Neuromodulin	M>F 0.9907	CN470733
28	TC194	>0.9999	NEUS_CHICK	Neuroserpin precursor	F>M 0.9972	CN472091 CN470987
29	TC118	0.9998	Q9DG82_BRARE	Prosaposin	M>F 0.981	CN470702 CN469089
30	TC293	0.9954	Q7ZVK1_BRARE	Programmed cell death 4		CN469526 CN469345
	TC50	>0.9999	Q9CX07_MOUSE	Schwannomin interacting protein 1	F>M >0.9999	CN469258 CN468951 CN468778 CN469293 CN470602
32	TC59	0.9988	Q94SU5_9TELE	Cytochrome <i>c</i> oxidase polypeptide II	M>F 0.992	CN471234 CN468585 CN469993 CN470960
33	TC32	0.9998	Q6PC12_BRARE	Enolase 1 (α)	M>F 0.9808	CN471530 CN470490 CN469477 CN470063 CN468844 CN471507
34	TC37	0.9944	Q6GQM9_BRARE	Enolase 2	F>M 0.9997	CN468546 CN469985 CN470377 CN470579 CN470334 CN471954
35	TC236	>0.9999	LDHB_FUNHE	L-lactate dehydrogenase B chain	M>F 0.9776	CN471785 CN469574
36	hh_Ab_Brain2000_000004040	0.9925	UCKL1_HUMAN	Uridine/cytidine kinase- like 1	F>M 0.9698	CN471544
37	TC9	>0.9999	CYB_TROMR	Cytochrome <i>b</i> family	F>M >0.9999	CN469537 CN472127 CN468899 CN471524 CN468840 CN468665 CN470523 CN470879 CN469159 CN470480 CN471698
38	TC2	>0.9999	COX1_GADMO	NADH dehydrogenase 1	M>F >0.9999	CN471102 CN471457 CN468916 CN469221 CN469647 CN468716 CN468577 CN471694 CN471641 CN470485 CN470000 CN470707 CN471789 CN469760 CN470493 CN470105 CN470059 CN470393 CN469356 CN469262 CN469782 CN469890 CN471563 CN468948 CN469399 CN469370 CN470270 CN468569 CN468629 CN468939 CN468984 CN469197 CN470537 CN469228 CN470360 CN468760 CN471735 CN469081 CN471463 CN470955 CN469236 CN469961 CN470974 CN470776 CN470943 CN470422 CN469166 CN470401 CN470094 CN469090 CN470333 CN470990 CN469377 CN472006 CN469835 CN471594 CN471502 CN471613
39	TC399	0.9999	Q802G7_BRARE	Selenoprotein M	F>M 0.9913	CN470322 CN471415
40	hh_Ab_Brain2000_000001906	0.9910	O42448_ONCMY	Id2 protein	F>M 0.8733	CN469312
41	hh_Ab_Brain2000_000003361	0.9900	O70534_RAT	ZOG protein	F>M 0.8924	CN469094
42	hh_Ab_Brain2000_000001970	0.9925	Q6GLW8_XENLA	Hypothetical protein	F>M 0.9616	CN469866
	hh_Ab_Brain2000_000002804	0.9995	Q6P4P6_BRARE	Zgc:73142 protein (HMP19 protein)		CN470474
44	hh_Ab_Brain2000_000003055	0.9989	Q5U4S4_XENLA	LOC495448 protein		CN469110
	hh_Ab_Brain2000_000003171	0.9999	Q803D7_BRARE	Sb:cb825 protein (fragment)	M>F 0.9983	CN469905
46	hh_Ab_Brain2000_000003205	0.9947	Q6GNE7_XENLA	MGC82852 protein ribosome receptor activity	M>F 0.9615	CN468798
47	hh_Ab_Brain2000_000003279	0.9905	Q9YHD1_ANGAN	Vacuolar-type H ⁺ transporting ATPase B2 subunit	F>M 0.9472	CN470271
48						

49	hh_Ab_Brain2000_000004166	0.9992	Q6NX86_BRARE	High mobility group box 1		CN469353
50	hh_Ab_Brain2000_000005599	0.9959	Q6PBW0_BRARE	Hypothetical protein zgc:73218	F>M 0.9808	CN468573
51	TC130	>0.9999	Q7T3D0_BRARE	Hypothetical protein zgc:63960		CN469895 CN469036 CN470236
52	TC263	0.9926	Q6DHN6_BRARE	Zgc:92198	F>M 0.9994	CN469161 CN470254
53	TC3	0.9939	Q9XS13_AULHA	MHC class I antigen (fragment)	F>M 0.9977	CN469821 CN470149 CN471956 CN470731 CN470028 CN469151 CN470286 CN469403 CN470971 CN470089 CN470037 CN470752 CN470789 CN470790 CN469654 CN470964 CN471635 CN471853 CN470770 CN470431 CN470239 CN469427 CN471682 CN470405 CN469937 CN469326 CN470171 CN471375 CN469957 CN470400 CN471023 CN470411 CN470113 CN471203 CN469842 CN470503 CN470076 CN470665 CN469283 CN471208 CN471445 CN470174
54	TC348	>0.9999	RB6A_HUMAN	Ras-related protein Rab-6A		CN470683 CN470922
55	TC358	0.9995	Q6DC23_BRARE	Zgc:101038 protein		CN470542 CN468893
56	TC40	0.9997	Q8AVI3_XENLA	Arbp-prov protein	M>F 0.9736	CN468856 CN471334 CN469463 CN468816 CN468761 CN470158
57	TC42	0.9999	PAB1_HUMAN	Polyadenylate-binding protein 1		CN471943 CN469610 CN472083 CN471653 CN469711 CN469712
58	TC92	0.9972	Q6DH87_BRARE	Zgc:92600	F>M 0.9992	CN469512 CN469793 CN471123
59	hh_Ab_Brain2000_000000266	0.9930	No hit			CN468734
60	hh_Ab_Brain2000_000000445	0.9907	No hit			CN471403
61	hh_Ab_Brain2000_000000721	0.9999	No hit		M>F 0.8632	CN469867
62	hh_Ab_Brain2000_000001308	0.9927	No hit			CN471252
63	hh_Ab_Brain2000_000001344	0.9975	No hit		F>M 0.9018	CN471031
64	hh_Ab_Brain2000_000001514	0.9959	No hit		F>M 0.9976	CN470794
65	hh_Ab_Brain2000_000002652	0.9966	No hit			CN469029
66	hh_Ab_Brain2000_000002716	>0.9999	No hit			CN472133
67	hh_Ab_Brain2000_000003221	0.9906	No hit			CN471928
68	hh_Ab_Brain2000_000003526	>0.9999	No hit		M>F 0.978	CN469794
69	hh_Ab_Brain2000_000004381	0.9945	No hit			CN470608
70	hh_Ab_Brain2000_000004448	0.9901	No hit		F>M 0.9126	CN470034
71	hh_Ab_Brain2000_000004666	0.9947	No hit		M>F 0.8909	CN469363
72	hh_Ab_Brain2000_000004942	0.9945	No hit			CN470536
73	hh_Ab_Brain2000_000005351	0.9909	No hit			CN472077
74	hh_Ab_Brain2000_000005370	0.9975	No hit		F>M 0.9827	CN472039
75	hh_Ab_Brain2000_000005597	0.9990	No hit		F>M 0.8163	CN470897
76	TC122	>0.9999	No hit		F>M >0.9987	CN472109 CN468690 CN469997
77	hh_Ab_Brain2000_000000701	>0.9999	No sequence available		M>F 0.9532	
78	hh_Ab_Brain2000_000002046	>0.9999	No sequence available		M>F 0.9692	
79	hh_Ab_Brain2000_000002098	0.9988	No sequence available		F>M 0.8548	
80	hh_Ab_Brain2000_000002763	0.9920	No sequence available			
81	hh_Ab_Brain2000_000002809	0.9938	No sequence available			
82	hh_Ab_Brain2000_000004498	0.9951	No sequence available		M>F >0.9999	
83	hh_Ab_Brain2000_000004530	0.9902	No sequence available		F>M 0.9361	
84	hh_Ab_Brain2000_000004538	0.9940	No sequence available		F>M 0.852	
85	hh_Ab_Brain2000_000004579	0.9958	No sequence available			
86	hh_Ab_Brain2000_000004958	0.9957	No sequence available		F>M 0.9488	
87	hh_Ab_Brain2000_000004970	0.9902	No sequence available			
88	hh_Ab_Brain2000_000004977	0.9955	No sequence available		F>M 0.9294	
89	hh_Ab_Brain2000_000005216	0.9900	No sequence available		F>M 0.8505	

Bayesian posterior probability (BPP) is given for regulation according to social status as well as according to sex (M>F and F>M)

Table S2. Array feature or tentative contig (TC) identification for genes significantly upregulated in subordinate (S) males relative to dominant (D) males

	Array feature ID or contig #	BPP S>D	Best BLAST hit SwissProt	Gene annotation	BPP regulated by sex	GenBank accession number
1	TC378	0.9989	Q8AXP9_PAROL	Cholecystokinin		CN468669 CN471180
2	TC136	0.9985	Q805E7_OREMO	C-type natriuretic peptide	F>M 0.9995	CN469018 CN470996 CN470119
3	TC15	>0.9999	Q90279_CARAU	Kainate receptor α subunit	M>F 0.9999	CN469912 CN470415 CN470495 CN469470 CN471822 CN471051 CN469432 CN469181
4	TC16	0.9980	Q90278_CARAU	Kainate receptor β subunit	M>F 0.9995	CN471822 CN471051 CN469432 CN469181
5	TC17	>0.9999	Q90278_CARAU	Kainate receptor β subunit	M>F 0.9906	CN470224 CN471452
6	hh_Ab_Brain2000_000003027	0.9912	Q90Z64_BRARE	Rev-Erb β 2		CN470396
7	hh_Ab_Brain2000_000005188	0.9938	Q99JD4_RAT	CLIP-associating protein		CN471531
8	TC108	0.9976	Q6TGB4_HAPBU	NeuroD.	M>F >0.9999	CN471908 CN471537
9	TC386	0.9956	Q6NY50_BRARE	Zgc:76913 protein:HLH domain DNA binding	M>F 0.9303	CN470993 CN469927
10	hh_Ab_Brain2000_000005191	0.9965	RBM5_HUMAN	RNA-binding protein 5	F>M 0.9907	CN471983
11	TC4	>0.9999	Q7YDM6_9LABR	ATP synthase 6	F>M >0.9999	CN471869 CN468771 CN469674 CN469755 CN470152 CN469651 CN472144 CN469154 CN471005 CN468684 CN470128 CN468587 CN468983 CN470130 CN469230 CN471815 CN468752 CN470366 CN468824 CN470140 CN469438 CN470307 CN468692 CN468660 CN468570 CN470168 CN471584
12	hh_Ab_Brain2000_000005311	0.9984	BADH_GADCA	Betaine aldehyde dehydrogenase	M>F 0.9998	CN471584
13	TC143	0.9999	Q8JIZ8_ORENI	Glutamine synthetase	F>M 0.998	CN470880 CN471535 CN470529
14	TC73	>0.9999	Q92102_PLEPL	Glutathione S-transferase		CN469352 CN471733 CN470324 CN469156 CN471511
15	hh_Ab_Brain2000_00000883	0.9933	Q802A1_FUGRU	Leucine carboxyl methyltransferase		CN470506 CN471160 CN468779 CN471503
16	TC34	0.9972	Q7ZU25_BRARE	Atp1a1a.1 protein	M>F 0.9999	CN470506 CN471160 CN468779 CN471503
17	TC139	0.9909	Q9DGL2_BRARE	Na ⁺ /K ⁺ ATPase β subunit	F>M 0.9951	CN468695 CN471875 CN470212
18	TC13	>0.9999	Q8M522_HAPBU	NADH dehydrogenase		CN470205 CN471962 CN471086 CN471491 CN470709 CN468813 CN469889 CN470818 CN470526 CN470312 CN470819 CN471359 CN469185 CN471940 CN468996 CN468825 CN470403 CN470489 CN469865
19	TC21	0.9998	Q8HLY8_9SMEG	NADH-ubiquinone oxidoreductase	F>M 0.9984	CN470819 CN471359 CN469185 CN471940 CN468996 CN468825 CN470403 CN470489 CN469865
20	TC1	>0.9999	NU1M_BRARE	NADH-ubiquinone oxidoreductase chain 1	M>F 0.9991	CN469747 CN469071 CN468769 CN470841 CN468662 CN470550 CN469522 CN470439 CN468955 CN468881 CN469623 CN471432 CN469832 CN468809 CN468741 CN470418 CN470024 CN469104 CN469538 CN470853 CN469575 CN470151 CN471438 CN469627 CN468974 CN468832 CN470560 CN470734 CN471662 CN471426 CN469873 CN470507 CN469828 CN469812 CN470945 CN469061

						CN470630 CN468593 CN471216 CN470380 CN471358 CN469031 CN470413 CN469986 CN471231 CN471157 CN468982 CN470012 CN469347 CN471931 CN470623 CN471585 CN469705 CN469287 CN471620 CN470257 CN469918 CN469358 CN471301 CN470456 CN470693 CN470299 CN469591 CN470704 CN471020 CN471016 CN469641 CN469715 CN469848 CN471089 CN470779 CN468781 CN470237 CN471855 CN469659 CN469219 CN470547 CN470005 CN470235 CN470068 CN469837 CN471211 CN471480 CN470133
21	TC344	0.9987	KPBB_HUMAN	Phosphorylase b kinase β regulatory chain	M>F 0.9943	
22	TC93	0.9999	Q6TGB2_HAPBU	Cellular retinoic acid-binding protein	M>F >0.9999	CN470558 CN470134
23	hh_Ab_Brain2000_000000351	0.9945	Q8MP30_DICDI	Hypothetical protein Similar to <i>Plasmodium lophurae</i>	F>M 0.995	CN469169
24	hh_Ab_Brain2000_000000478	0.9984	Q6P0Y9_BRARE	Hsp90b protein		CN471263
25	hh_Ab_Brain2000_000002836	0.9965	Q803P7_BRARE	Cysteine-rich protein 2	M>F 0.994	CN470759
26	hh_Ab_Brain2000_000003043	0.9910	Q6PUV9_ONCMY	14-3-3 protein		CN468820
27	hh_Ab_Brain2000_000003823	0.9952	NRP1A_BRARE	Neuropilin-1a	F>M 0.8944	CN471169
28	hh_Ab_Brain2000_000004548	0.9910	MRP5_RAT	Multidrug resistance-associated protein 5	F>M 0.9665	CN469870
29	hh_Ab_Brain2000_000005563	0.9906	Q8CGN9_MOUSE	Histone Hist2h3c1	M>F 0.9791	CN471466
30	hh_Ab_Brain2000_000001151	0.9919	RAS_CARAU	Ras-like protein	M>F 0.9791	CN468860
31	TC100	0.9970	Q8AY63_BRARE	Brain-subtype creatine kinase	M>F 0.9998	CN471555 CN470387 CN469490
32	TC109	0.9971	SERF2_HUMAN	Small EDRK-rich factor 2	F>M 0.9971	CN471356 CN468555 CN471950
33	TC176	0.9996	Q16861_HUMAN	Super cysteine rich protein	M>F 0.983	CN471155 CN469864
34	TC253	>0.9999	Q98TL4_PLAFE	α -2-HS-glycoprotein	M>F 0.9997	CN468738 CN468857
35	TC36	0.9929	Q8JHI0_BRARE	Solute carrier family 25 member 5 protein	F>M 0.9995	CN469670 CN470918 CN470154 CN470934 CN470592 CN471902
36	TC5	>0.9999	Q7ZV45_BRARE	Solute carrier family 25	F>M >0.9999	CN470169 CN468835 CN470326 CN469716 CN470395 CN469843 CN470215 CN469649 CN469137 CN469434 CN472160 CN470931 CN470656 CN469082 CN470444 CN472032 CN470961 CN471587 CN469919
37	TC84	0.9993	Q66NF8_ORYLA	Hypothetical protein	M>F >0.9999	CN471067 CN470598 CN468960 CN471132
38	hh_Ab_Brain2000_000000172	0.9955	No hit			CN471132
39	hh_Ab_Brain2000_000000412	0.9964	No hit		M>F 0.9955	CN470736
40	hh_Ab_Brain2000_000000461	0.9937	No hit		F>M 0.9965	CN471181
41	hh_Ab_Brain2000_000000521	>0.9999	No hit		F>M 0.9984	CN468780
42	hh_Ab_Brain2000_000000695	0.9911	No hit			CN472175
43	hh_Ab_Brain2000_000001661	0.9978	No hit			CN471565
44	hh_Ab_Brain2000_000001730	0.9943	No hit		M>F 0.8829	CN472040
45	hh_Ab_Brain2000_000001775	0.9971	No hit			CN469012
46	hh_Ab_Brain2000_000001934	>0.9999	No hit		F>M 0.9715	CN469691
47	hh_Ab_Brain2000_000002219	0.9995	No hit		F>M 0.9463	CN468728
48	hh_Ab_Brain2000_000002632	0.9952	No hit		M>F 0.925	CN471717
49	hh_Ab_Brain2000_000003466	0.9979	No hit		F>M 0.9934	CN470101

50	hh_Ab_Brain2000_000005476	0.9993	No hit		CN470512
51	hh_Ab_Brain2000_000005518	0.9961	No hit	M>F 0.9197	CN468956
52	hh_Ab_Brain2000_000005532	>0.9999	No hit		CN471082
53	hh_Ab_Brain2000_000005577	0.9929	No hit		CN471570
54	hh_Ab_Brain2000_000005642	0.9991	No hit	M>F 0.9261	CN471919
55	TC112	>0.9999	No hit	F>M 0.9805	CN468913 CN470820 CN471505
56	TC131	>0.9999	No hit	M>F >0.9999	CN469231 CN469838 CN470620
57	TC206	0.9935	No hit	F>M 0.9001	CN471431 CN471454
58	TC217	0.9985	No hit	M>F 0.9618	CN469099 CN472022
59	TC244	0.9971	No hit	M>F 0.9066	CN471171 CN471421
60	TC25	>0.9999	No hit	M>F >0.9999	CN469746 CN469616 CN472211 CN468556 CN471516 CN469349
61	TC26	0.9921	No hit	M>F >0.9999	CN469214 CN471348
62	TC332	0.9980	No hit		CN469124 CN469339
63	TC375	0.9973	No hit	F>M 0.9997	CN470061 CN468831
64	TC79	>0.9999	No hit	M>F 0.9712	CN470498 CN469049 CN471890 CN470374
65	hh_Ab_Brain2000_000000875	0.9987	No sequence available		
66	hh_Ab_Brain2000_000002814	0.9927	No sequence available	M>F 0.9961	
67	hh_Ab_Brain2000_000002963	0.9914	No sequence available		
68	hh_Ab_Brain2000_000003668	0.9928	No sequence available		
69	hh_Ab_Brain2000_000003743	0.9975	No sequence available	F>M 0.9037	
70	hh_Ab_Brain2000_000003757	0.9944	No sequence available	F>M 0.9081	
71	hh_Ab_Brain2000_000003791	0.9996	No sequence available	M>F 0.992	
72	hh_Ab_Brain2000_000003797	0.9982	No sequence available		
73	hh_Ab_Brain2000_000003803	0.9978	No sequence available		
74	hh_Ab_Brain2000_000003927	0.9975	No sequence available	M>F 0.9405	
75	hh_Ab_Brain2000_000004112	0.9949	No sequence available	M>F >0.9999	
76	hh_Ab_Brain2000_000004649	0.9966	No sequence available	F>M 0.8343	
77	hh_Ab_Brain2000_000004944	0.9975	No sequence available	F>M 0.8082	
78	hh_Ab_Brain2000_000004966	0.9967	No sequence available	F>M 0.8751	
79	hh_Ab_Brain2000_000005135	0.9998	No sequence available	M>F 0.9986	
80	hh_Ab_Brain2000_000005291	0.9947	No sequence available	M>F 0.8113	
81	hh_Ab_Brain2000_000005325	0.9987	No sequence available	M>F 0.9499	
82	hh_Ab_Brain2000_000005343	0.9989	No sequence available		
83	hh_Ab_Brain2000_000005373	0.9947	No sequence available	M>F 0.9216	
84	hh_Ab_Brain2000_000005375	0.9997	No sequence available		

Bayesian posterior probability (BPP) is given for regulation according to social status as well as according to sex (M>F and F>M)
